

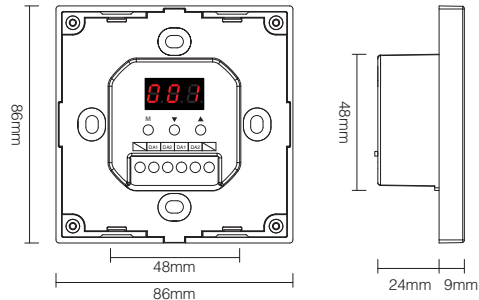
1. Features

Adopt DALI standard protocol IEC62386. Powered by DALI bus, digital tube display, simple and quick function setting. It can control the ON/OFF, color, color temperature, saturation and brightness of DALI lightings, and support scene saving and selection.

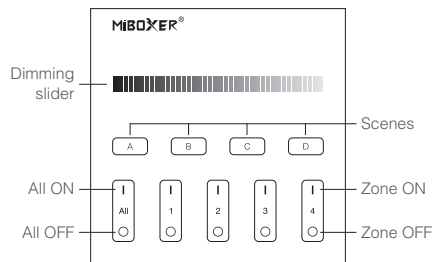
1. Support DALI standard protocol IEC62386-102, 207, 209.
2. Support DT8 type. Tc, xy coordinates, RGBWAF.
3. Support 4 control modes: scene, grouping, unicast and broadcast.
4. Support ON/OFF, color, color temperature, saturation, and brightness control.
5. Digital tube displays address, group, scene. Function setting is simple and quick.
6. Powered by DALI Bus.
7. Touch control, sensitive touch.

2. Parameters

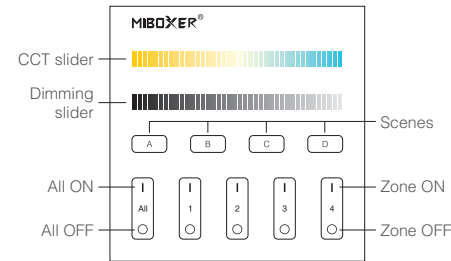
Model No.	DP1S	DP2S	DP3S
Power Supply	DALI Power	DALI Power	DALI Power
DALI Bus Standard	IEC62386	IEC62386	IEC62386
Output Signal	DALI Signal	DALI Signal	DALI Signal
Controlling Type	Dimming(DT6)	CCT (DT8 type: Tc)	RGB (DT8 type: xy coordinates) RGBW (DT8 type: RGBWAF) RGB+CCT (DT8 type: RGBWAF)
Standby Current	<4mA@16V	<4mA@16V	<4mA@16V
Working Temp.	-10~40°C	-10~40°C	-10~40°C
Weight	145g	145g	145g



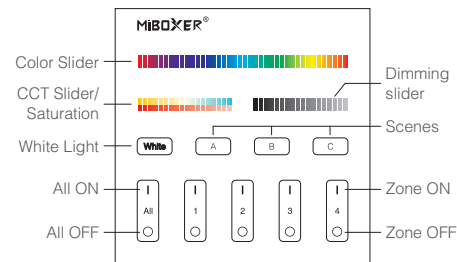
DALI Dimming Touch Panel (DT6) Model No.: DP1S



DALI Color Temp. Touch Panel (DT8) Model No.: DP2S



DALI 3 in 1 Touch Panel (DT8) Model No.: DP3S



3. Button function instruction

- Change lamp colors.
- Adjust color temperature.
- Under white light mode, adjust color temperature.
Under color light mode, change lamp colors.
- Adjust brightness(1%~100%).
- Short press to get white light mode.
- Short press A or B or C or D to select scene.
Long press A or B or C or D button to save the current light status to Corresponding scene (see more on instruction 5).
- Master ON:** Short press to turn on all the lights under groups 1-4 on this panel.
Long press for 5 seconds to turn on the button sound.
- Zone on (1-4):** Short press to turn on all the lights in the group.
- Master OFF:** Short press to turn off all the lights under groups 1-4 on the panel.
Long press for 5 seconds to turn off the button sound.
- Zone OFF (1-4):** Short press to turn off all lights in the group.
- Indicator light: The group indicator light is always on, indicating that the group has been selected;
The indicators of the 4 groups are all on, indicating that all 4 groups are selected.

DALI Touch Panel

Model No.: DP1S / DP2S / DP3S

4. Function setting instruction

4.1 Digital tube display state instruction

Self-locking: If there is no operation for 5s, it will enter the locked state, and the digital tube will not display.

Unlocking: Long press the **M** button for 2s until the digital tube is highlighted, and the unlock is successful.

4.2 Control mode setting (Only DP3S have this function)

Under unlocked status, short press **M** button; until the digital tube display DP3-DP5, press **▲** button or **▼** button to switch (RGB, RGBW, RGB CCT) 3 different control mode.

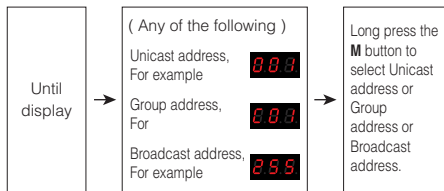
DP3 RGB dimming control mode (DT8 type:x-y)

DP4 RGBW dimming control mode (DT8 type:RGBWAF)

DP5 RGB CCT dimming control mode (DT8 type:RGBWAF)

4.3 DALI unicast address, group address and broadcast address settings

Under unlocked status, short press **M** button,



Unicast address:

When display (000-063): DALI panel is in unicast address mode. Short press **▲** or **▼** to set the start unicast address of DALI panel, long press can quickly adjust.

For example:

Panel set unicast address	Unicast addresses corresponding to the 4 groups			
	Zone-1	Zone-2	Zone-3	Zone-4
001	001	002	003	004
062	062	063	000	001

Group address:

When display (C00-C15): DALI panel is in group address mode. Short press the **▲** or **▼** to set the starting group address of the DALI panel, long press can quickly adjust.

For example:

Panel set group address	Group addresses corresponding to the 4 groups			
	Zone-1	Zone-2	Zone-3	Zone-4
001	01	02	03	04
014	14	15	00	01

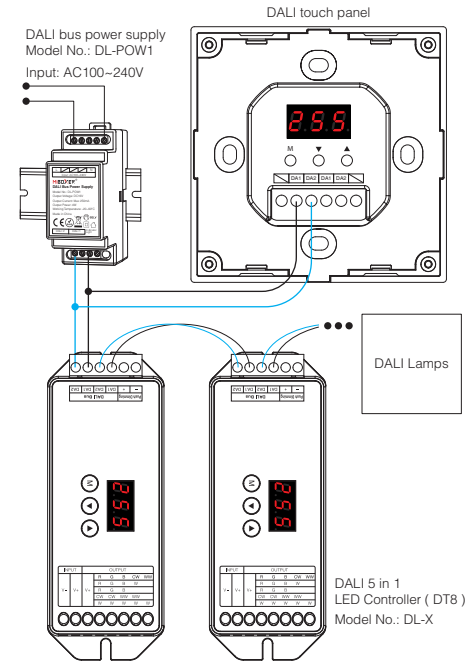
5. Scene setting

Under the unlocked state, short press the **M** button until the digital tube displays (E00-E15). Short press **▲** or **▼** to set the initial scene value of the DALI panel, long press for quick adjustment.

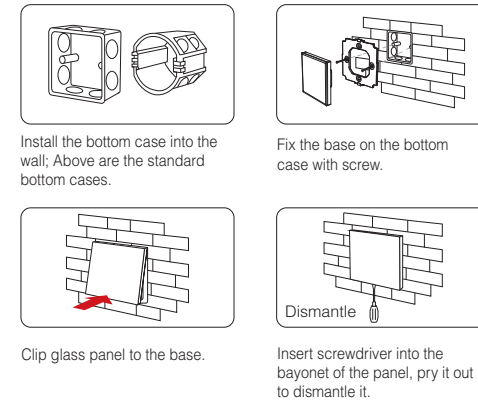
For example:

Setting to	Relative scene for (A B C D) button		
	DP1S	DP2S	DP3S
E03	(A) : Scenes 01	(A) : Scenes 01	(A) : Scenes 01
	(B) : Scenes 02	(B) : Scenes 02	(B) : Scenes 02
	(C) : Scenes 03	(C) : Scenes 03	(C) : Scenes 03
	(D) : Scenes 04	(D) : Scenes 04	
E34	(A) : Scenes 14	(A) : Scenes 14	(A) : Scenes 14
	(B) : Scenes 15	(B) : Scenes 15	(B) : Scenes 15
	(C) : Scenes 00	(C) : Scenes 00	(C) : Scenes 00
	(D) : Scenes 01	(D) : Scenes 01	

6. Connection Diagram



7. Installation / Dismantlement



8. Attention

1. The product shall be debugged and installed by professionals.
2. Before switching on the power, please ensure that all wiring is correct, so as not to cause damage to the device.
3. If there is faults, non-professional please do not repair without permission, otherwise the device may be damaged.



Made in China