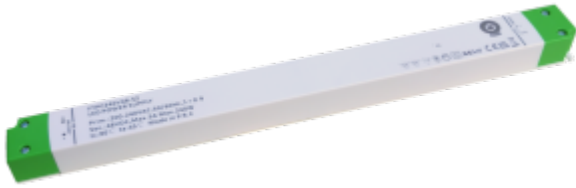


FTPC240V48-S2



Features:

- Constant voltage design
- European AC input range
- Protections: Short circuit / Over current / Over voltage / Over Temperature
- Cooling by free air convection
- Compliance to worldwide regulations for lighting
- Extremely short and slim case size



ELECTRICAL SPECIFICATION

Output Voltage	48V DC
Rated Current	5A
Power (W)	240W
Dimming	No
Voltage Ripple & Noise (max.)	1440mVp-p
Line Regulation	± 1%
Load Regulation	± 1%
Setup, Rise Time	300ms, 100ms
AC input voltage range	European
PFC	Yes
Protection class	II
Efficiency (typ.)	93%
AC Current (typ.)	1.8A
No Load Power Consumption (typ. / max.)	0.21W
Inrush Current (typ.)	75A
IP protection level	IP20
Over Current / Overload protection	Type: hiccup mode, auto-recovery.
Short Circuit protection	Type: hiccup mode, auto-recovery.
Over Voltage protection	Type: shut down output voltage. Re-power on to recovery.
Working Temperature range	-20°C ÷ +45°C
Working Humidity range	10 ÷ 90% RH non-condensing
Storage Temperature and Humidity	-40°C ÷ +85°C, 5 ÷ 95% RH non-condensing
Safety Standards	EN 61347-2-13, Compliance to EN 61347-1
Withstand Voltage	IN/OUT: 3750VAC / 5mA, 60s

Isolation Resistance	IN/OUT: $\geq 10M\Omega / 500VDC$
EMC Emission	Compliance to EN55015
EMC Immunity	Compliance to EN61547
Harmonic Current	Compliance to EN61000-3-2 Class C
Dimensions (L x W x H)	356.4 x 32.1 x 222.3
Weight (kg)	0.34
Packing	20PCS/Carton
Warranty	5 years
Mounting	surface
Programmable	No

MECHANICAL SPECIFICATION