

C2 Remote Control (2.4GHz)

Model No.: C2

Contents

<u>Product Features</u>	2
<u>Product parameters</u>	2
<u>Button Description</u>	3
<u>Link / Unlink</u>	4
<u>Installation Notes</u>	5
<u>Attention</u>	5

1. Product Features

With timing switch, two-way communication, vibration feedback and other functions (MiBoxer series smart switches and smart plugs only), with magnetic wall mount, easy to use 4 groups independently control the on/off of the device.

2. Product parameters

Model No.: C2

Working Voltage: 3V (AAA * 2PCS)

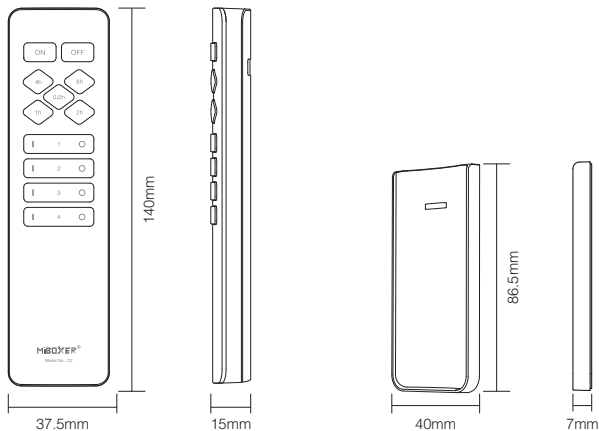
Transmitting Power: 6dBm

Standby Power Consumption: 5 μ A

RF: 2.4GHz

Working Temperature: -10~40°C

Control Distance: 30m



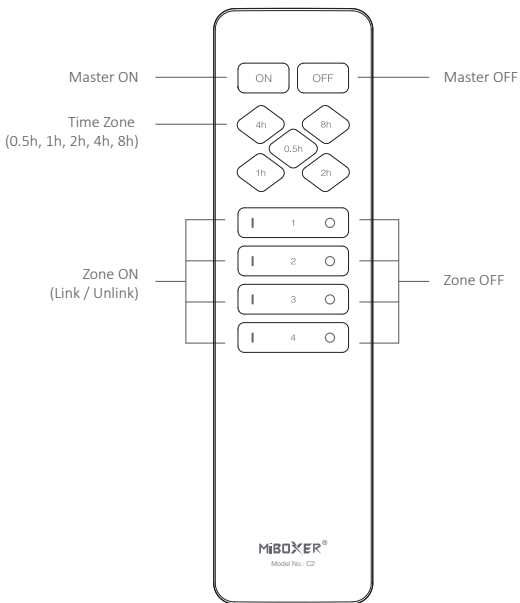
3. Button Description

Time zone (0.5h, 1h, 2h, 4h, 8h)

- (1) Select the group where the device is located.
- (2) Select the required timing time(If the device is on, the scheduled function will turn off the device; otherwise, the scheduled function will turn on the device.)

Attention:

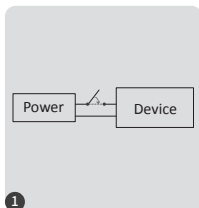
- (1) When the device is in the timing state, Press the "I" or "O" or "ON/OFF" key of the group where the device is located to cancel the current scheduled time.
- (2) "ON / OFF" key can cancel the timing time of all groups.



4. Linking/Unlinking

Used with MiBoxer series smart switches or smart sockets, devices can be turned on/off at scheduled times.

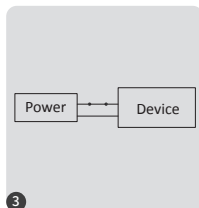
Linking instruction



Turn off light after 10 seconds turn off



Short press "I" 3 times within 3 second when the light on

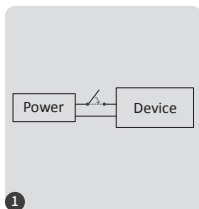


Light flashing 3 times slowly means it is successfully



Linking failed if light is not blinking slowly, Please follow above steps again.
(Note: Light that have linked can't link again)

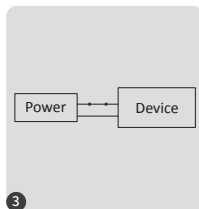
Unlinking instruction



Turn off light after 10 seconds turn on



Short press "I" 5 times within 3 second when the light on

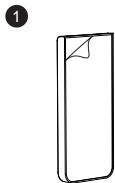


Light flashing 10 times slowly means it is successfully

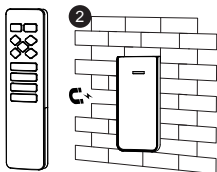


Unlinking failed if light is not blinking quickly, Please follow above steps again.
(Note: Light haven't linked that don't need to unlink)

5. Installation Notes



Take off the double-sided tape on the back of the base



Stick the base well, and the remote control is magnetically attracted to the base

6. Attention

1. This remote only control specified Mi-Light / MiBoxer products; details please check manual.
2. This remote control is a precision electronic product, please do not use it in a humid or high temperature environment for a long time. When not in use for a long time, please take out the battery and store it in a dry, static-free environment.
3. Do not use the remote control in a large area of metal or in an environment with strong electromagnetic waves nearby, otherwise the control distance will be seriously affected.



Made in China