

Luminaire Property

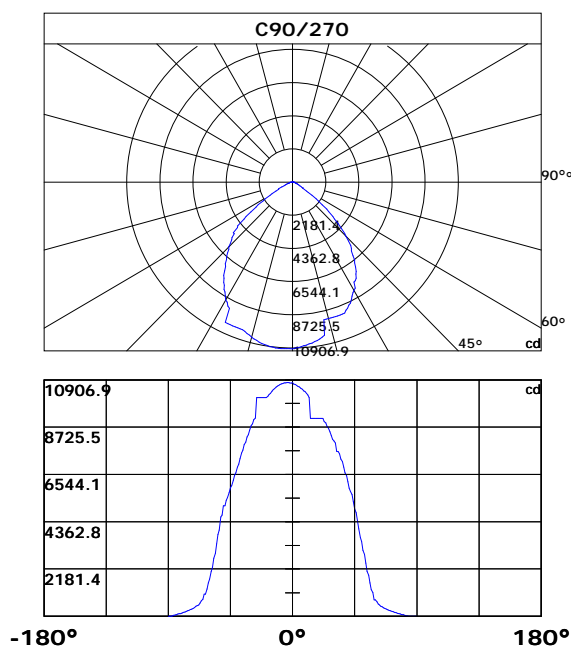
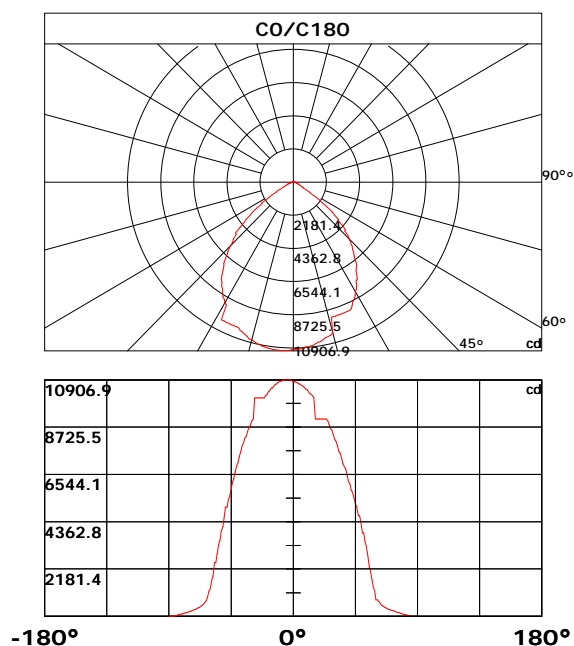
Luminaire Description: UFO-150W
 Luminaire Category:
 Lamp Category:
 Lamp Description:
 Number of Lamp:
 Lamp Lumens(lm): 20192.04
 Luminous Length(m):
 Luminous Width(m):
 Luminous Height(m):

Voltage: 231.4 V
 Current: 0.649 A
 Power: 149.31 W
 Power Factor: 0.994
 Test Lab:
 Photometric Type: Type C

Photometric Results

CIE Class: Direct
 Measurement Flux: 20192.04 lm
 Efficiency: 135.2357 lm/W
 Central Intensity: 10781.21cd
 Max. Intensity: 10906.92cd
 Field Angle(10%Imax): 119.79, 119.56

Max.Intensity Angle: C:180.0 G:3.0
 Beam Angle(50%Imax): 89.95, 88.6
 Luminaire Efficacy Rating(LER) : 100.00%
 Upward Ratio: 0.0%
 Downward Ratio: 100.0%



Light intensity data Unit[cd]

C\G	G0.0	G1.0	G2.0	G3.0	G4.0	G5.0	G6.0	G7.0	G8.0	G9.0
C0.0	10781.2	10835.4	10796.1	10774.6	10728.1	10706.7	10649.4	10620.8	10556.5	10488.5
C30.0	10781.2	10620.8	10603.0	10552.9	10492.1	10459.9	10392.0	10316.9	10270.4	10181.0
C60.0	10781.2	10713.8	10699.5	10663.8	10617.3	10585.1	10527.9	10459.9	10424.2	10341.9
C90.0	10781.2	10710.2	10695.9	10653.0	10606.5	10577.9	10517.1	10477.8	10406.3	10370.5
C120.0	10781.2	10796.1	10781.8	10774.6	10753.2	10753.2	10703.1	10660.2	10635.1	10581.5
C150.0	10781.2	10839.0	10835.4	10835.4	10810.4	10785.3	10774.6	10735.3	10710.2	10660.2
C180.0	10781.2	10874.7	10892.6	10906.9	10906.9	10903.3	10899.8	10892.6	10871.2	10839.0
C210.0	10781.2	10670.9	10699.5	10717.4	10721.0	10721.0	10710.2	10688.8	10674.5	10642.3
C240.0	10781.2	10749.6	10753.2	10749.6	10742.4	10728.1	10710.2	10678.1	10656.6	10610.1
C270.0	10781.2	10753.2	10771.0	10781.8	10785.3	10774.6	10767.5	10742.4	10731.7	10695.9
C300.0	10781.2	10803.2	10799.6	10788.9	10778.2	10753.2	10742.4	10703.1	10667.3	10645.9
C330.0	10781.2	10835.4	10824.7	10817.5	10799.6	10774.6	10746.0	10728.1	10692.4	10649.4
C360.0	10781.2	10835.4	10796.1	10774.6	10728.1	10706.7	10649.4	10620.8	10556.5	10488.5
C\G	G10.0	G11.0	G12.0	G13.0	G14.0	G15.0	G16.0	G17.0	G18.0	G19.0
C0.0	10452.8	10363.4	10281.1	10234.6	10181.0	10084.4	9090.3	9090.3	9090.3	9090.3
C30.0	10134.5	9090.3	9090.3	9090.3	9090.3	9090.3	9090.3	9090.3	9090.3	9090.3
C60.0	10248.9	10202.4	10156.0	10156.0	10156.0	10156.0	10156.0	10156.0	10156.0	10156.0
C90.0	10288.3	10198.9	10098.7	9136.8	9136.8	9136.8	9136.8	9136.8	9136.8	9136.8
C120.0	10552.9	10488.5	10409.9	10366.9	10316.9	10227.5	10130.9	10073.7	10073.7	10073.7
C150.0	10595.8	10560.0	10438.5	10438.5	10345.5	10241.8	10191.7	10080.9	9126.1	9126.1
C180.0	10824.7	10781.8	10724.5	10695.9	10620.8	10538.6	10538.6	10402.7	10349.1	10241.8
C210.0	10628.0	10577.9	10552.9	10492.1	10456.3	10381.2	10291.8	10248.9	10148.8	10095.2
C240.0	10549.3	10510.0	10434.9	10352.6	10306.1	10209.6	10159.5	9140.4	9140.4	9140.4
C270.0	10653.0	10620.8	10567.2	10495.7	10463.5	10377.7	10288.3	10245.4	10145.2	10095.2
C300.0	10588.7	10527.9	10484.9	10413.4	10334.8	10281.1	10188.1	10134.5	9090.3	9090.3
C330.0	10628.0	10570.8	10542.2	10481.4	10445.6	10370.5	10291.8	10245.4	10145.2	10095.2
C360.0	10452.8	10363.4	10281.1	10234.6	10181.0	10084.4	9090.3	9090.3	9090.3	9090.3
C\G	G20.0	G21.0	G22.0	G23.0	G24.0	G25.0	G26.0	G27.0	G28.0	G29.0
C0.0	9090.3	9090.3	9090.3	9090.3	9090.3	9011.6	8840.0	8664.7	8571.8	8378.7
C30.0	9090.3	8940.1	8940.1	8786.3	8632.6	8553.9	8389.4	8303.6	8056.8	7963.8
C60.0	10156.0	10156.0	9104.6	8958.0	8886.5	8729.1	8654.0	8489.5	8317.9	8235.6
C90.0	9136.8	9136.8	9136.8	8990.2	8918.6	8768.5	8689.8	8514.6	8350.1	8174.8
C120.0	10073.7	10073.7	10073.7	10073.7	10073.7	10073.7	9097.4	8936.5	8779.2	8689.8
C150.0	9126.1	9126.1	9126.1	9126.1	9126.1	9126.1	9126.1	8965.1	8882.9	8711.2
C180.0	10184.6	10070.1	10070.1	10070.1	10070.1	10070.1	10070.1	10070.1	10070.1	9093.9
C210.0	10095.2	10095.2	10095.2	10095.2	10095.2	10095.2	10095.2	10095.2	9054.5	8882.9
C240.0	9140.4	9140.4	9140.4	9140.4	9140.4	9140.4	8968.7	8868.6	8679.0	8475.2
C270.0	10095.2	10095.2	10095.2	10095.2	10095.2	10095.2	10095.2	9151.1	9065.3	8886.5
C300.0	9090.3	9090.3	9090.3	9090.3	9090.3	9090.3	9090.3	9004.5	8818.5	8718.4
C330.0	10095.2	10095.2	10095.2	10095.2	10095.2	10095.2	10095.2	10095.2	9051.0	8961.6
C360.0	9090.3	9090.3	9090.3	9090.3	9090.3	9011.6	8840.0	8664.7	8571.8	8378.7

Light intensity data Unit[cd]

C\G	G30.0	G31.0	G32.0	G33.0	G34.0	G35.0	G36.0	G37.0	G38.0	G39.0
C0.0	8178.4	8078.3	7863.7	7606.2	7531.1	7291.5	7037.6	6912.5	6780.2	6508.4
C30.0	7878.0	7609.8	7499.0	7398.8	7191.4	6969.7	6858.8	6619.2	6379.7	6258.1
C60.0	8060.4	7967.4	7785.0	7588.4	7488.2	7277.2	7170.0	6941.1	6705.1	6583.5
C90.0	8081.9	7988.9	7609.8	7595.5	7484.7	7255.8	7134.2	6883.9	6619.2	6483.4
C120.0	8511.0	8328.6	8235.6	8042.5	7938.8	7731.4	7509.7	7395.3	7152.1	7023.3
C150.0	8525.3	8339.3	8139.1	8035.4	7920.9	7606.2	7448.9	7313.0	7030.5	6730.1
C180.0	9004.5	8818.5	8725.5	8528.9	8307.1	8199.9	7981.7	7856.6	7609.8	7348.8
C210.0	8797.1	8607.5	8414.4	8314.3	8106.9	7892.3	7774.3	7545.4	7305.8	7180.7
C240.0	8371.5	8156.9	7931.7	7606.2	7588.4	7470.3	7223.6	7098.4	6737.3	6615.7
C270.0	8797.1	8586.1	8375.1	8267.8	8035.4	7913.8	7663.5	7538.3	7273.7	7012.6
C300.0	8514.6	8300.0	8189.1	7956.7	7602.7	7588.4	7316.6	7041.2	6894.6	6608.5
C330.0	8772.0	8575.3	8471.6	8246.3	8131.9	7892.3	7649.1	7388.1	7255.8	6973.3
C360.0	8178.4	8078.3	7863.7	7606.2	7531.1	7291.5	7037.6	6912.5	6780.2	6508.4
C\G	G40.0	G41.0	G42.0	G43.0	G44.0	G45.0	G46.0	G47.0	G48.0	G49.0
C0.0	6240.2	6090.0	5828.9	5696.6	5439.2	5181.7	5049.4	4641.7	4641.7	4348.5
C30.0	6011.3	5761.0	5639.4	5392.7	5271.1	5020.8	4759.7	4623.8	4309.1	4144.6
C60.0	6336.7	6075.7	5943.4	5678.8	5414.1	5278.2	4985.0	4706.1	4573.8	4244.8
C90.0	6204.4	5914.8	5764.6	5610.8	5296.1	4963.5	4766.9	4409.3	4033.8	3640.4
C120.0	6758.7	6476.2	6329.6	6029.2	5875.4	5714.5	5206.7	5027.9	4663.2	4566.6
C150.0	6579.9	6258.1	6093.6	5736.0	5389.1	5203.1	4838.4	4652.4	4273.4	4080.3
C180.0	7080.6	6937.5	6644.3	6347.5	6193.7	5871.9	5542.9	5378.4	5031.5	5031.5
C210.0	6933.9	6808.8	6547.7	6279.5	6279.5	5861.1	5703.8	5407.0	5099.4	4938.5
C240.0	6494.1	6258.1	6136.5	5904.0	5668.0	5550.0	5310.4	5171.0	4899.2	4605.9
C270.0	6880.3	6626.4	6504.8	6265.2	6032.8	5921.9	5700.2	5474.9	5346.2	5092.3
C300.0	6469.1	6197.3	5936.2	5811.1	5560.7	5306.8	5188.8	4945.7	4673.9	4530.8
C330.0	6690.8	6551.3	6272.4	6136.5	6000.6	5600.1	5471.3	5210.3	5210.3	4813.4
C360.0	6240.2	6090.0	5828.9	5696.6	5439.2	5181.7	5049.4	4641.7	4641.7	4348.5
C\G	G50.0	G51.0	G52.0	G53.0	G54.0	G55.0	G56.0	G57.0	G58.0	G59.0
C0.0	3840.7	3840.7	3444.1	3227.4	2772.1	2311.2	2089.5	1680.7	1334.2	1186.5
C30.0	3790.6	3601.1	3191.3	2752.5	2526.5	2080.9	1869.2	1309.5	1153.3	1015.6
C60.0	3894.3	3708.4	3313.9	3105.1	2674.5	2455.7	2037.6	1656.4	1484.8	1181.9
C90.0	3444.8	3043.6	2846.5	2453.5	2071.6	1887.4	1542.0	1230.5	1097.5	758.8
C120.0	4087.4	3865.7	3462.3	3058.6	2857.3	2460.0	2078.4	1892.4	1536.6	1225.5
C150.0	3694.0	3302.5	2910.2	2712.4	2513.2	2119.2	1735.8	1552.4	1223.4	1085.3
C180.0	4580.9	4130.3	3940.8	3524.2	3321.1	2905.9	2481.8	2481.8	1851.0	1653.9
C210.0	4781.2	4570.2	4094.6	3708.4	3506.7	3081.5	2869.1	2436.4	2226.4	1809.8
C240.0	4448.6	4094.6	3908.6	3507.4	3078.6	2855.5	2416.3	1998.3	1800.9	1436.1
C270.0	5092.3	4666.7	4584.5	3973.0	3772.7	3345.7	2902.3	2684.2	2269.4	2075.9
C300.0	4216.2	4040.9	3669.0	3264.9	3053.6	2636.6	2432.4	2051.6	1876.7	1547.7
C330.0	4570.2	4570.2	4051.7	3872.9	3479.5	3056.4	2842.6	2619.4	2204.6	1819.8
C360.0	3840.7	3840.7	3444.1	3227.4	2772.1	2311.2	2089.5	1680.7	1334.2	1186.5

Light intensity data Unit[cd]

C\G	G60.0	G61.0	G62.0	G63.0	G64.0	G65.0	G66.0	G67.0	G68.0	G69.0
C0.0	753.1	753.1	687.3	582.2	506.7	475.3	420.2	396.2	355.6	321.1
C30.0	756.3	717.4	597.6	517.5	486.0	432.7	385.9	369.0	331.9	300.7
C60.0	1049.9	830.7	678.4	619.7	527.8	487.4	457.0	407.7	365.1	329.5
C90.0	758.8	661.2	561.1	521.4	454.5	428.1	382.6	362.6	326.7	294.6
C120.0	1089.3	1089.3	688.7	623.7	524.2	458.1	458.1	383.4	361.5	327.0
C150.0	753.5	676.9	613.6	518.5	455.9	430.9	388.4	352.6	336.3	305.7
C180.0	1296.3	1139.3	887.9	714.9	648.0	545.0	505.3	456.7	398.0	378.3
C210.0	1430.1	1254.1	1098.6	754.2	677.7	557.5	516.4	459.5	408.4	370.1
C240.0	1127.5	755.3	755.3	661.2	604.4	507.8	478.1	417.3	371.2	351.7
C270.0	1714.7	1545.2	1255.5	1024.9	1024.9	779.6	717.7	606.9	525.3	490.6
C300.0	1259.8	1136.5	756.0	756.0	692.3	543.2	543.2	468.5	411.2	388.0
C330.0	1645.7	1329.9	1074.6	1074.6	791.7	658.0	604.7	517.5	459.2	459.2
C360.0	753.1	753.1	687.3	582.2	506.7	475.3	420.2	396.2	355.6	321.1
C\G	G70.0	G71.0	G72.0	G73.0	G74.0	G75.0	G76.0	G77.0	G78.0	G79.0
C0.0	305.8	276.9	263.4	236.4	210.2	196.6	170.9	158.8	134.9	109.9
C30.0	272.4	259.2	232.4	218.1	192.0	166.9	154.9	131.2	118.9	75.7
C60.0	313.6	284.8	257.7	243.9	216.9	192.5	180.6	157.7	133.6	122.1
C90.0	279.4	249.1	220.2	206.4	179.9	167.1	141.4	116.2	104.6	75.7
C120.0	296.1	281.6	253.9	240.5	226.5	188.2	176.0	152.6	140.7	117.3
C150.0	277.3	248.6	234.1	207.0	193.8	167.8	155.1	129.9	117.8	74.8
C180.0	343.6	313.1	296.9	268.6	240.3	227.0	199.8	173.6	160.5	135.3
C210.0	353.7	321.8	292.7	278.5	250.0	235.4	207.6	182.2	169.3	144.7
C240.0	318.3	302.9	273.1	244.0	230.9	204.4	192.1	168.3	143.3	130.4
C270.0	458.8	407.0	361.9	322.8	305.4	271.5	255.0	224.7	195.6	181.9
C300.0	346.6	327.6	293.8	264.1	249.5	220.3	193.6	180.6	156.0	131.5
C330.0	376.2	338.5	322.1	291.7	264.4	249.2	221.2	221.2	182.4	157.0
C360.0	305.8	276.9	263.4	236.4	210.2	196.6	170.9	158.8	134.9	109.9
C\G	G80.0	G81.0	G82.0	G83.0	G84.0	G85.0	G86.0	G87.0	G88.0	G89.0
C0.0	76.0	76.0	65.6	45.2	25.1	16.5	3.6	2.0	2.1	2.3
C30.0	75.7	64.7	44.9	26.3	17.0	9.7	5.3	3.2	2.1	1.6
C60.0	110.5	78.9	68.9	49.8	46.2	21.0	5.4	1.4	1.1	1.1
C90.0	73.3	53.7	34.4	23.7	6.8	3.9	2.5	1.8	1.5	1.3
C120.0	105.7	83.8	62.5	52.7	46.7	24.4	7.5	1.1	1.1	1.1
C150.0	70.7	60.0	41.3	30.2	11.9	1.0	0.9	1.0	1.0	1.1
C180.0	111.2	111.2	88.4	77.4	46.4	27.1	18.2	3.3	1.1	1.0
C210.0	132.2	108.2	87.1	76.1	56.7	46.7	28.2	12.3	1.9	1.9
C240.0	107.0	75.4	75.4	65.9	44.2	25.1	17.0	6.0	1.8	1.9
C270.0	155.2	127.4	114.6	103.0	71.4	61.1	46.7	21.8	3.3	1.9
C300.0	119.5	75.3	73.8	62.3	41.2	31.1	14.7	6.0	1.9	2.0
C330.0	144.5	120.0	108.7	108.7	65.8	55.5	45.8	18.5	5.3	2.1
C360.0	76.0	76.0	65.6	45.2	25.1	16.5	3.6	2.0	2.1	2.3

Light intensity data Unit[cd]

C\G	G90.0									
C0.0	2.5									
C30.0	1.1									
C60.0	1.2									
C90.0	1.2									
C120.0	1.1									
C150.0	1.1									
C180.0	1.1									
C210.0	2.0									
C240.0	2.0									
C270.0	2.1									
C300.0	2.1									
C330.0	2.5									
C360.0	2.5									

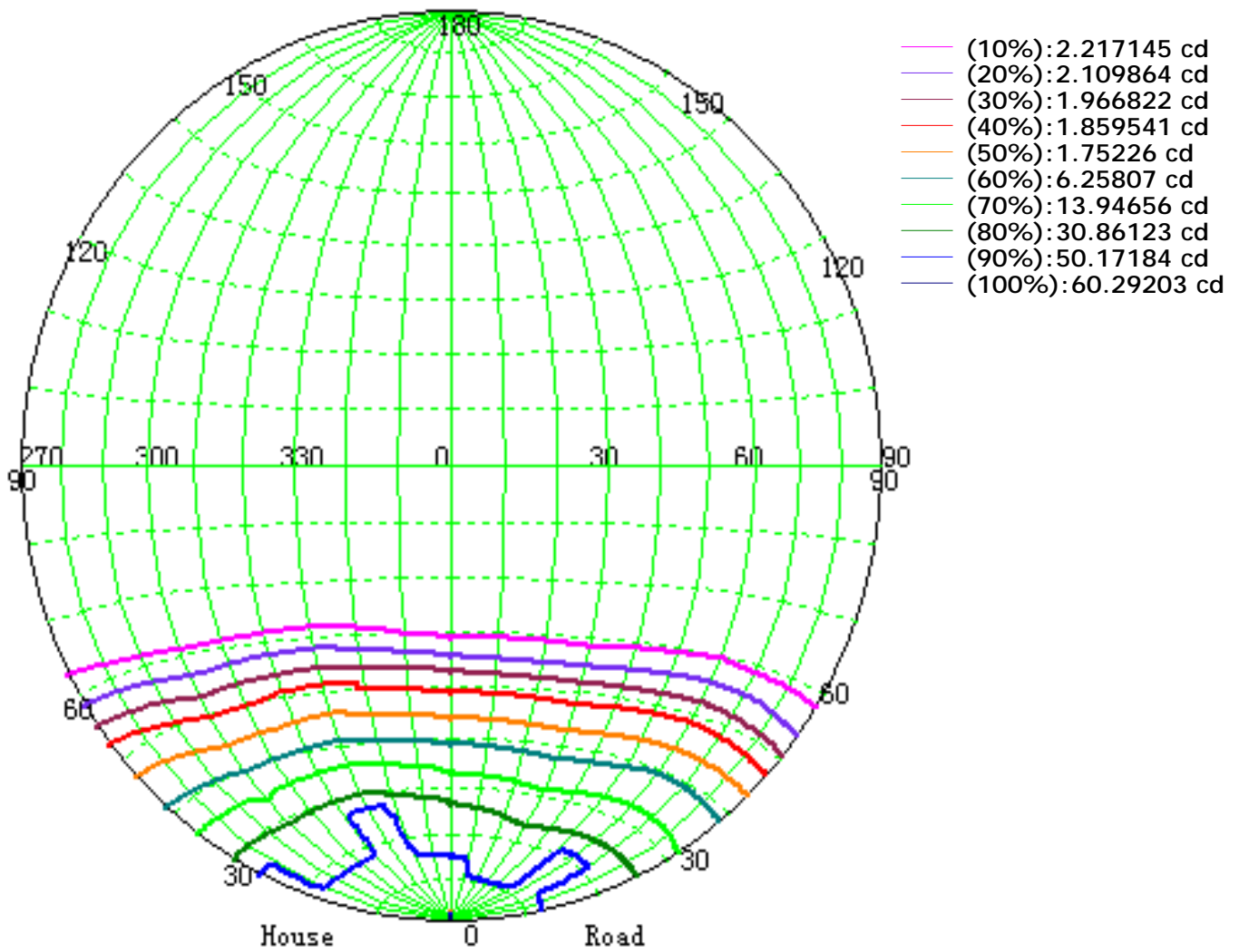
Zonal Luminous Flux Data

Gamma [°]	I _{mean} [cd]	Zonal Flux [lm]	Sum Flux [lm]	Zonal Flux [%]	Sum Flux [%]
0.0	10781.21	0.00	0.00	0.00	0.00
0.0-1.0	10766.86	10.31	10.31	0.05	0.05
1.0-2.0	10762.69	30.90	41.21	0.15	0.20
2.0-3.0	10751.36	51.45	92.67	0.25	0.46
3.0-4.0	10728.42	71.90	164.57	0.36	0.82
4.0-5.0	10710.24	92.23	256.79	0.46	1.27
5.0-6.0	10678.35	112.40	369.20	0.56	1.83
6.0-7.0	10642.00	132.34	501.53	0.66	2.48
7.0-8.0	10608.02	152.08	653.61	0.75	3.24
8.0-9.0	10558.85	171.55	825.16	0.85	4.09
9.0-10.0	10512.07	190.68	1015.84	0.94	5.03
10.0-11.0	10374.39	208.70	1224.54	1.03	6.06
11.0-12.0	10315.09	226.17	1450.71	1.12	7.18
12.0-13.0	10196.18	243.42	1694.13	1.21	8.39
13.0-14.0	10154.46	260.49	1954.61	1.29	9.68
14.0-15.0	10091.29	277.94	2232.55	1.38	11.06
15.0-16.0	9962.85	293.85	2526.40	1.46	12.51
16.0-17.0	9837.09	308.34	2834.74	1.53	14.04
17.0-18.0	9641.01	321.15	3155.89	1.59	15.63
18.0-19.0	9619.25	335.09	3490.98	1.66	17.29
19.0-20.0	9614.48	352.03	3843.01	1.74	19.03
20.0-21.0	9592.43	368.81	4211.83	1.83	20.86
21.0-22.0	9504.82	383.77	4595.59	1.90	22.76
22.0-23.0	9467.57	398.09	4993.69	1.97	24.73
23.0-24.0	9442.83	413.45	5407.13	2.05	26.78
24.0-25.0	9404.09	428.54	5835.67	2.12	28.90
25.0-26.0	9267.61	440.75	6276.42	2.18	31.08
26.0-27.0	9096.55	449.28	6725.70	2.23	33.31
27.0-28.0	8808.08	453.31	7179.01	2.24	35.55
28.0-29.0	8597.69	455.38	7634.39	2.26	37.81
29.0-30.0	8457.63	460.49	8094.89	2.28	40.09
30.0-31.0	8279.73	465.78	8560.66	2.31	42.40
31.0-32.0	8103.31	469.35	9030.02	2.32	44.72
32.0-33.0	7932.25	472.41	9502.43	2.34	47.06
33.0-34.0	7777.29	475.42	9977.85	2.35	49.41
34.0-35.0	7590.74	477.27	10455.12	2.36	51.78
35.0-36.0	7397.34	477.22	10932.34	2.36	54.14
36.0-37.0	7211.08	476.44	11408.79	2.36	56.50
37.0-38.0	6978.64	473.63	11882.42	2.35	58.85
38.0-39.0	6777.19	469.52	12351.95	2.33	61.17
39.0-40.0	6556.67	465.04	12816.99	2.30	63.48

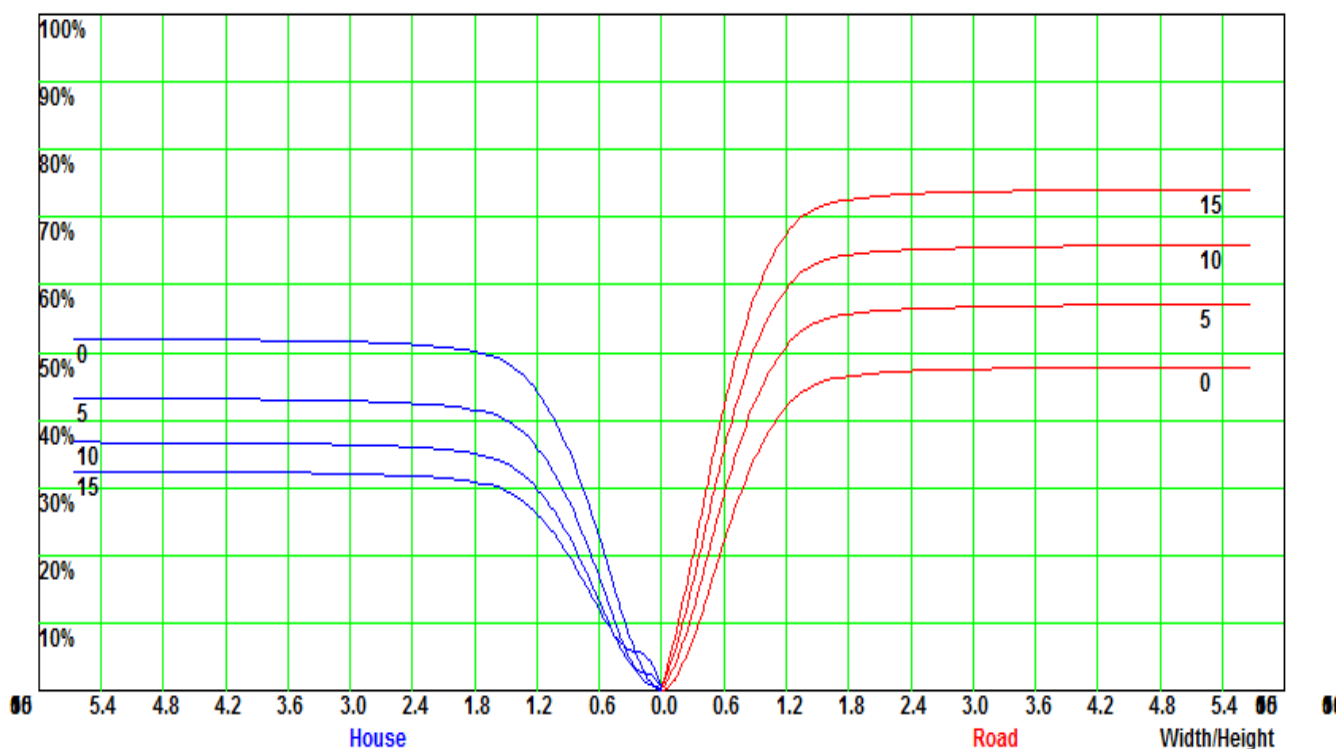
Zonal Luminous Flux Data

Gamma [°]	I _{mean} [cd]	Zonal Flux [lm]	Sum Flux [lm]	Zonal Flux [%]	Sum Flux [%]
40.0-41.0	6329.59	458.87	13275.86	2.27	65.75
41.0-42.0	6136.78	452.93	13728.79	2.24	67.99
42.0-43.0	5907.32	446.15	14174.94	2.21	70.20
43.0-44.0	5701.70	438.16	14613.10	2.17	72.37
44.0-45.0	5456.14	428.81	15041.90	2.12	74.49
45.0-46.0	5210.29	417.14	15459.04	2.07	76.56
46.0-47.0	4970.70	404.92	15863.97	2.01	78.57
47.0-48.0	4729.61	392.14	16256.11	1.94	80.51
48.0-49.0	4503.13	379.15	16635.25	1.88	82.39
49.0-50.0	4203.43	363.01	16998.25	1.80	84.18
50.0-51.0	3952.90	345.08	17343.34	1.71	85.89
51.0-52.0	3618.12	324.88	17668.22	1.61	87.50
52.0-53.0	3263.35	299.34	17967.56	1.48	88.98
53.0-54.0	2968.95	274.69	18242.25	1.36	90.34
54.0-55.0	2599.66	248.57	18490.83	1.23	91.57
55.0-56.0	2274.75	220.26	18711.09	1.09	92.67
56.0-57.0	1966.14	193.90	18904.99	0.96	93.63
57.0-58.0	1671.56	168.22	19073.21	0.83	94.46
58.0-59.0	1399.75	143.59	19216.80	0.71	95.17
59.0-60.0	1136.26	119.81	19336.61	0.59	95.76
60.0-61.0	990.74	101.50	19438.11	0.50	96.27
61.0-62.0	804.55	86.51	19524.62	0.43	96.69
62.0-63.0	697.39	73.05	19597.66	0.36	97.06
63.0-64.0	616.18	64.46	19662.13	0.32	97.38
64.0-65.0	525.29	56.49	19718.62	0.28	97.66
65.0-66.0	488.13	50.56	19769.18	0.25	97.91
66.0-67.0	433.15	46.32	19815.50	0.23	98.14
67.0-68.0	387.53	41.57	19857.08	0.21	98.34
68.0-69.0	359.72	38.12	19895.20	0.19	98.53
69.0-70.0	328.49	35.35	19930.54	0.18	98.70
70.0-71.0	300.94	32.53	19963.08	0.16	98.87
71.0-72.0	275.18	29.96	19993.04	0.15	99.01
72.0-73.0	251.83	27.56	20020.59	0.14	99.15
73.0-74.0	229.98	25.33	20045.92	0.13	99.28
74.0-75.0	207.24	23.10	20069.02	0.11	99.39
75.0-76.0	187.36	20.95	20089.97	0.10	99.49
76.0-77.0	166.42	18.86	20108.83	0.09	99.59
77.0-78.0	146.47	16.75	20125.58	0.08	99.67
78.0-79.0	121.34	14.39	20139.97	0.07	99.74
79.0-80.0	106.79	12.30	20152.27	0.06	99.80
80.0-81.0	86.21	10.44	20162.70	0.05	99.85

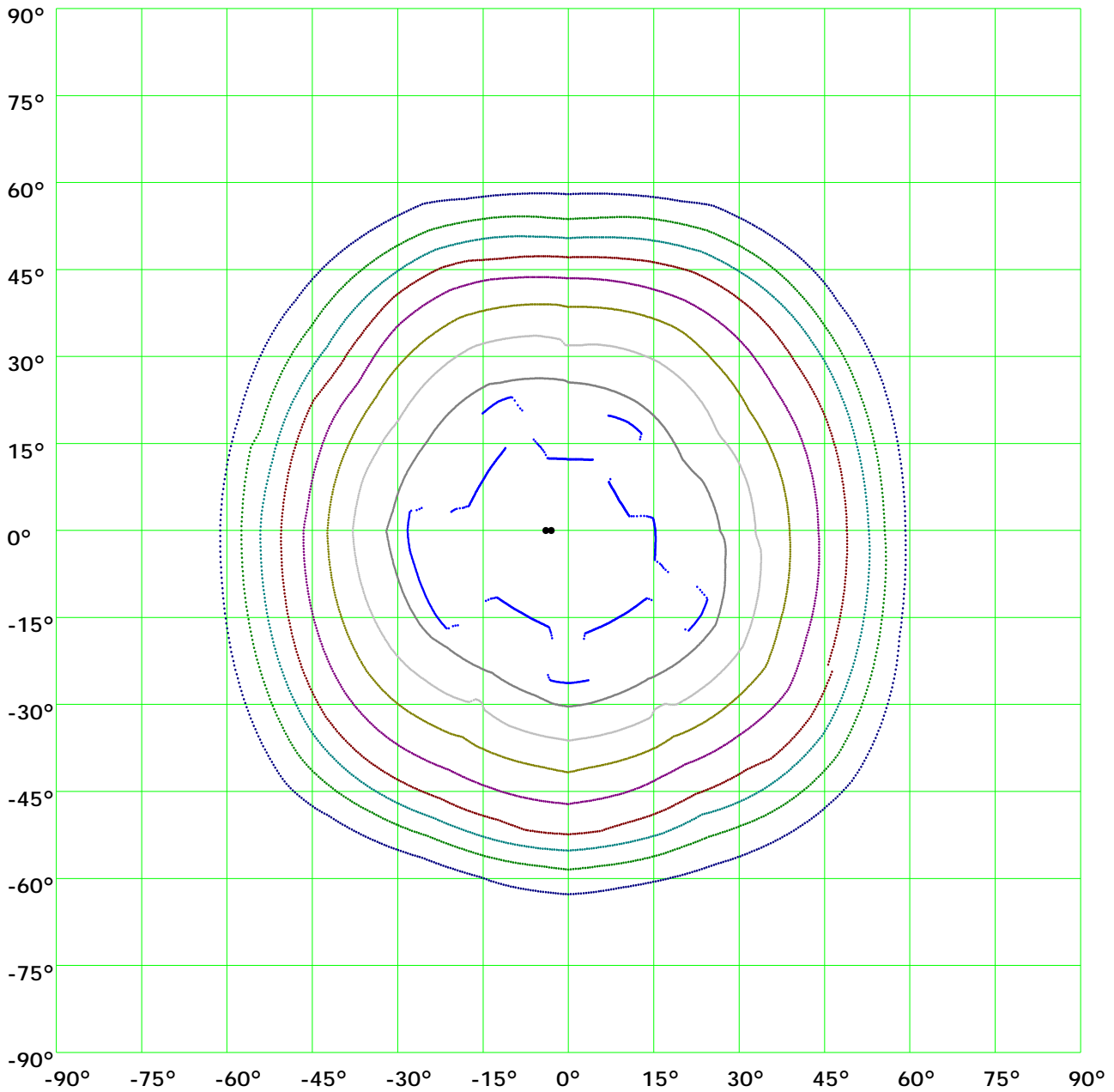
Iso-Candela [cd]



Coefficient Utilization Curve

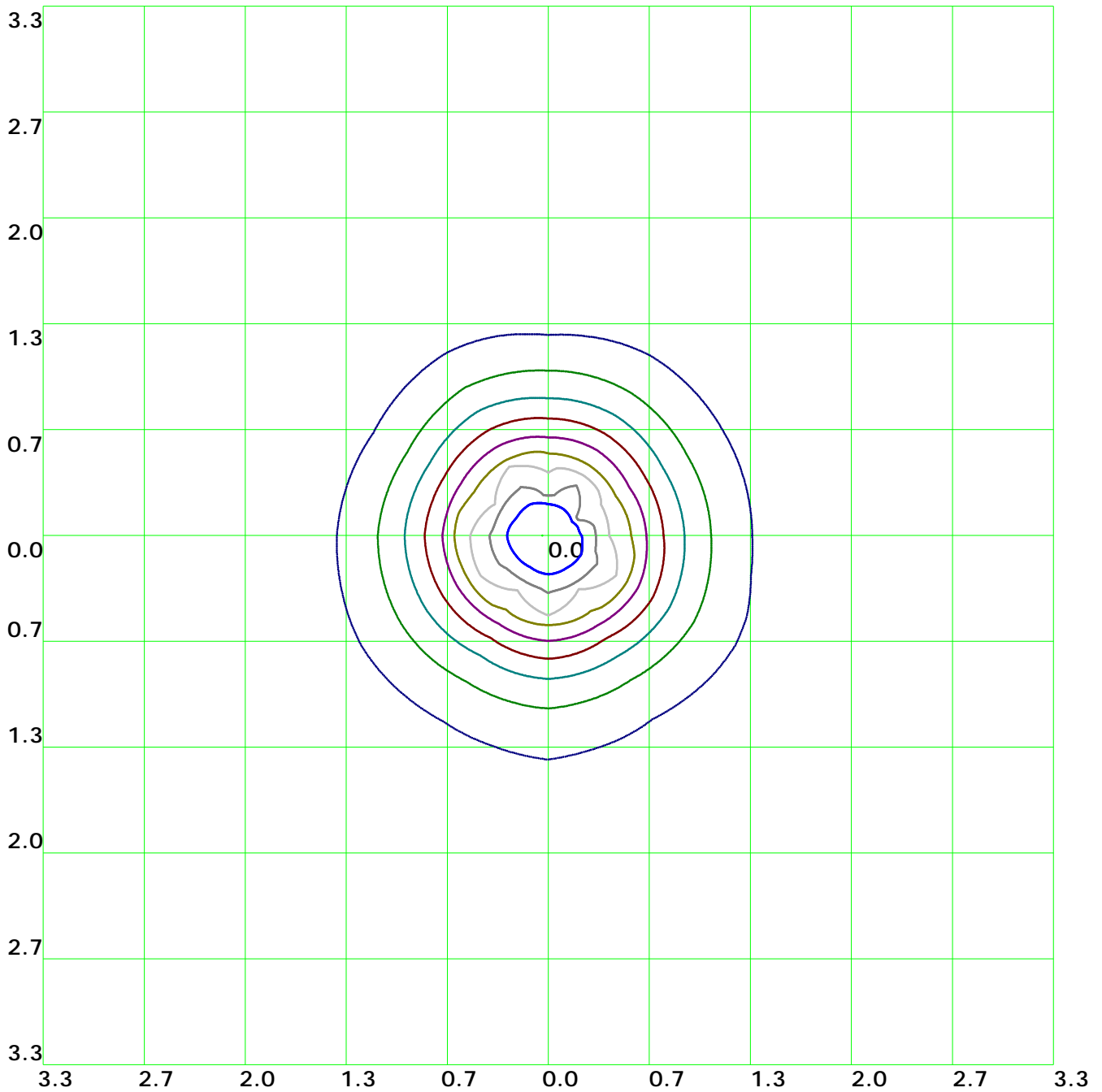


Isocandela(rectangle)



— (10%): 1090.7cd	— (20%): 2181.4cd	— (30%): 3272.1cd	— (40%): 4362.8cd
— (50%): 5453.5cd	— (60%): 6544.2cd	— (70%): 7634.8cd	— (80%): 8725.5cd
— (90%): 9816.2cd	— (100%): 10906.9cd		

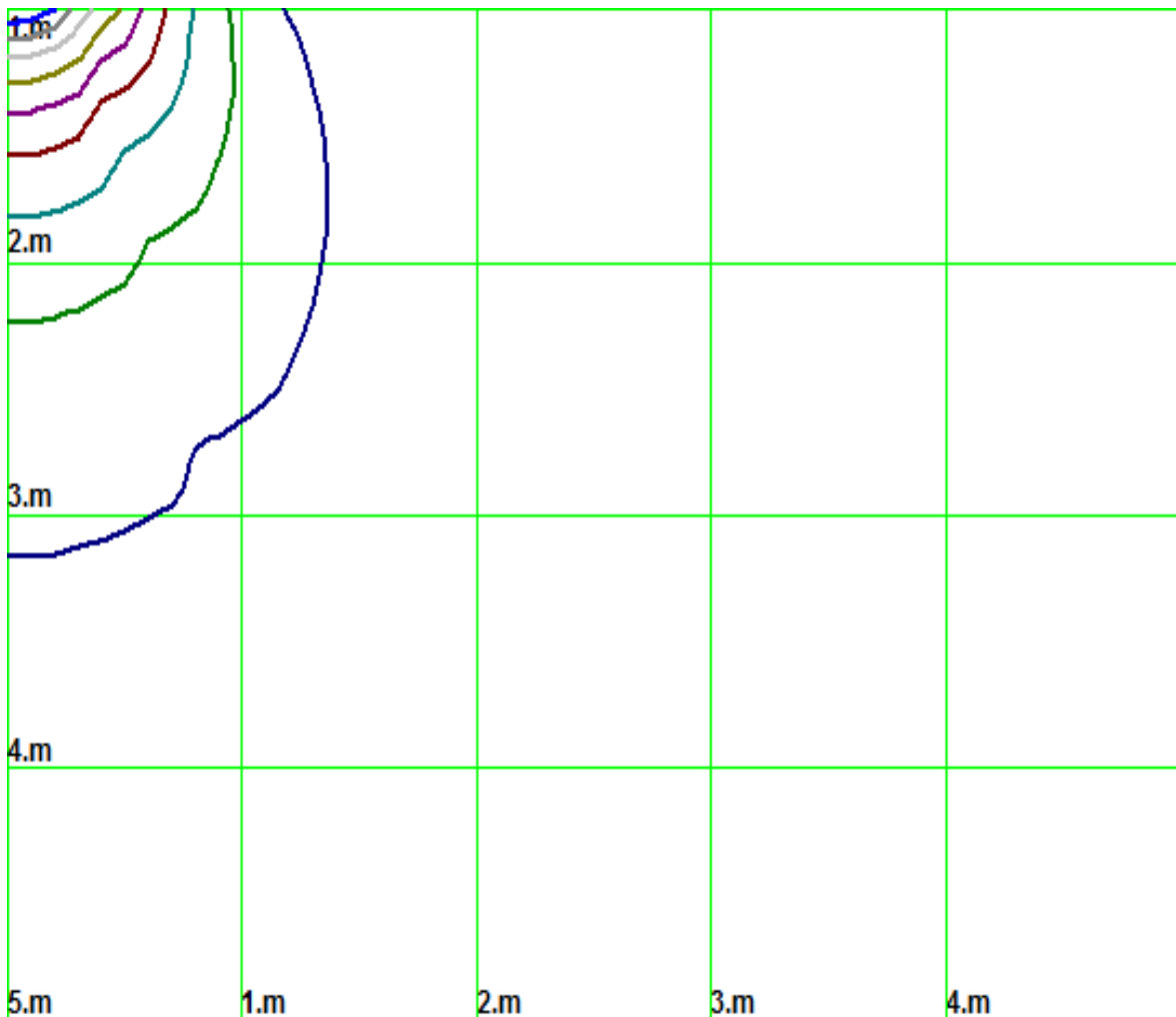
Isolx curve



Height: 1 m

- (10%): 1090.7lx — (20%): 2181.4lx — (30%): 3272.1lx — (40%): 4362.8lx
- (50%): 5453.5lx — (60%): 6544.2lx — (70%): 7634.9lx — (80%): 8725.5lx
- (90%): 9816.2lx — (100%): 10896.1lx

Space Isolx Curve



— (10%): 1090.7lx	— (20%): 2181.4lx	— (30%): 3272.1lx	— (40%): 4362.8lx
— (50%): 5453.5lx	— (60%): 6544.2lx	— (70%): 7634.9lx	— (80%): 8725.5lx
— (90%): 9816.2lx	— (100%): 10896.1lx		

Luminance Limiting Curve

Diameter: 0mm

Length: 0mm

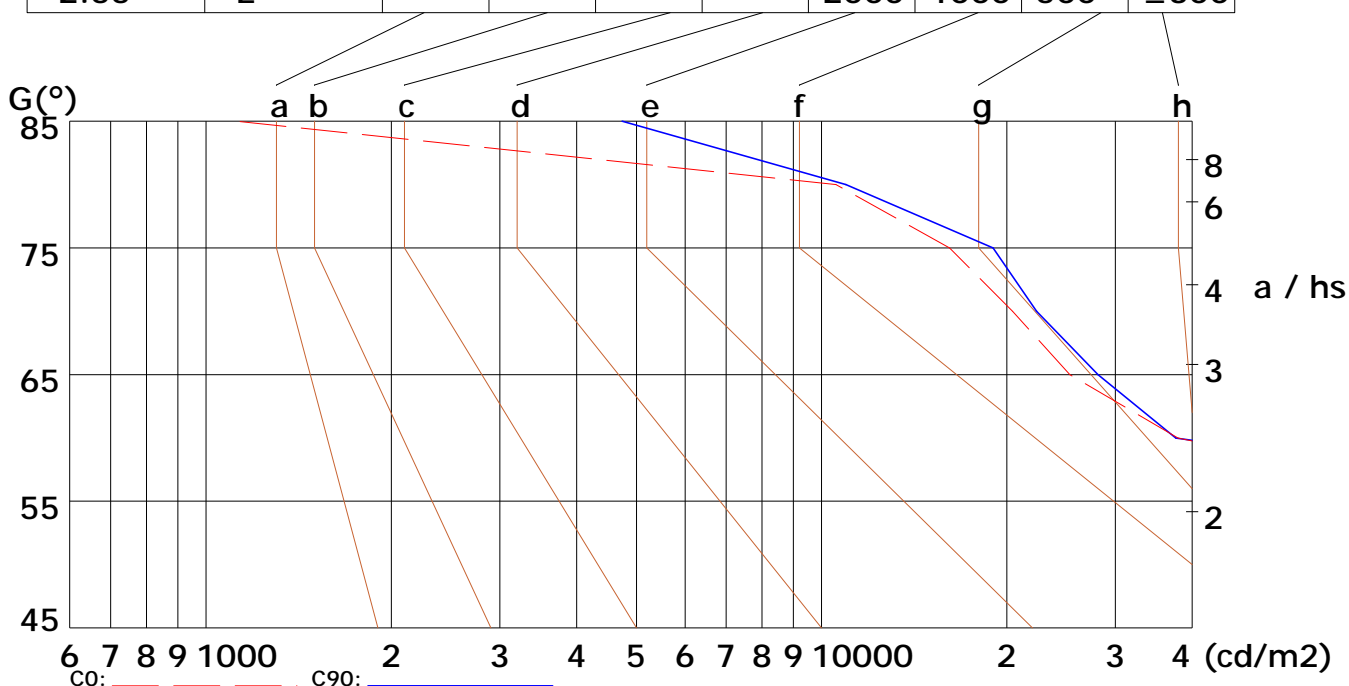
Width: 0mm

Height: 0mm

(cd/m²)

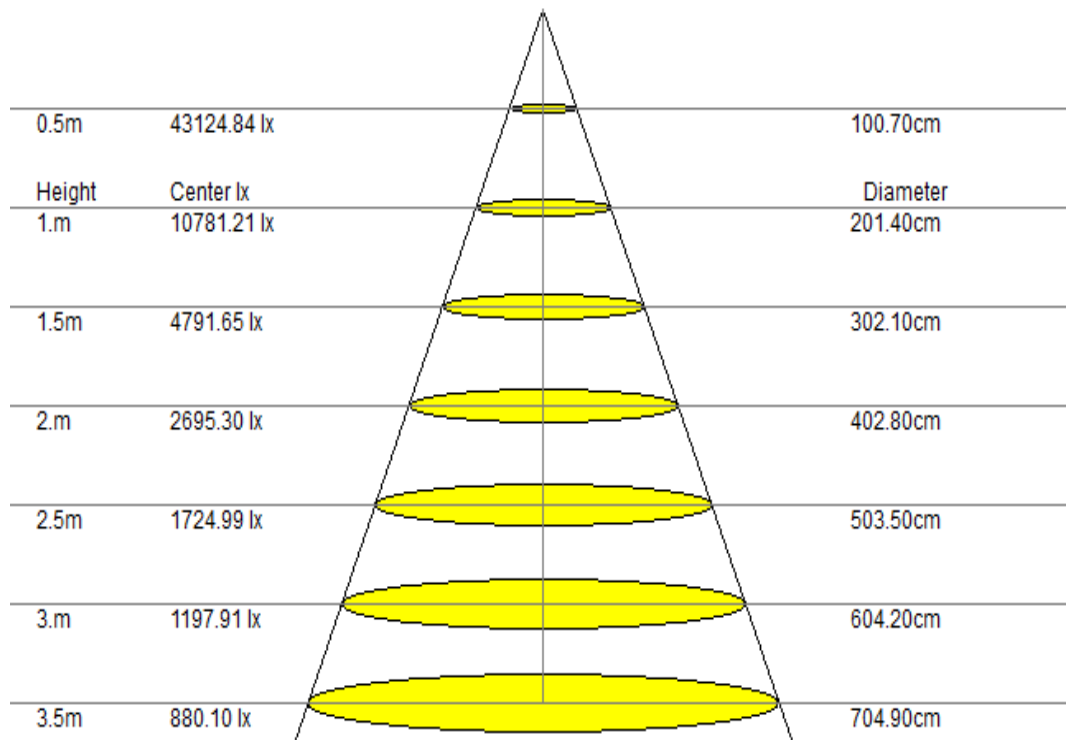
γ	45°	50°	55°	60°	65°	70°	75°	80°	85°
C0	175488	133978	92266	37942	25321	20425	16141	10549	1118
C90	183200	149375	100736	37656	28114	22352	18988	10945	4739

Glare	Quality	Service Values Illuminance (lx)									
1.15	A	2000	1000	500	≤300						
1.5	B		2000	1000	500	≤300					
1.85	C			2000	1000	500	≤300				
2.2	D				2000	1000	500	≤300			
2.55	E					2000	1000	500	≤300		



Lum. Limiting Curve (C0/C90)

Lux-Distance Curve

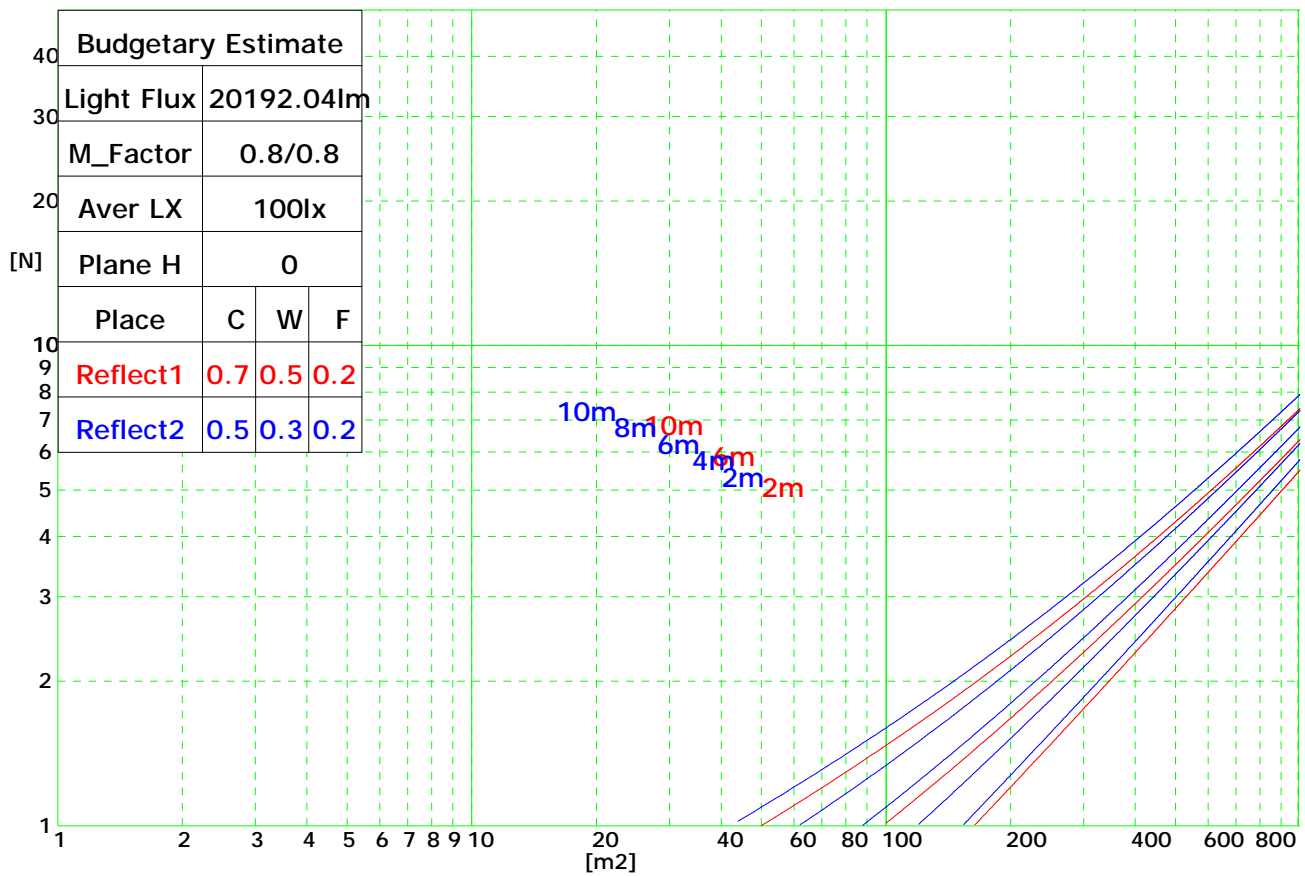


Beam Angle: 90.40°(50%Imax)

Coefficients of Utilization

RHOCC	80			70			50			30			10			0
RHOW	50	30	10	50	30	10	50	30	10	50	30	10	50	30	10	0
RCR	COEFFICIENTS OF UTILIZATION FOR RHOFC=20															
0	1.19	1.19	1.19	1.16	1.16	1.16	1.11	1.11	1.11	1.06	1.06	1.06	1.02	1.02	1.02	1.00
1	1.10	1.09	1.08	1.09	1.07	1.06	1.05	1.03	1.02	0.99	0.98	0.96	0.92	0.91	0.89	0.84
2	0.98	0.97	0.95	0.97	0.95	0.93	0.94	0.92	0.89	0.90	0.87	0.85	0.85	0.82	0.79	0.74
3	0.88	0.86	0.84	0.87	0.84	0.82	0.85	0.81	0.79	0.82	0.78	0.75	0.78	0.74	0.70	0.66
4	0.78	0.76	0.75	0.78	0.75	0.73	0.77	0.73	0.70	0.74	0.70	0.66	0.71	0.66	0.62	0.58
5	0.70	0.68	0.66	0.70	0.67	0.65	0.69	0.65	0.62	0.68	0.63	0.59	0.65	0.60	0.56	0.52
6	0.63	0.61	0.59	0.63	0.60	0.58	0.63	0.59	0.56	0.62	0.57	0.53	0.60	0.55	0.50	0.46
7	0.57	0.55	0.54	0.58	0.54	0.52	0.57	0.53	0.50	0.57	0.52	0.48	0.56	0.50	0.45	0.42
8	0.52	0.50	0.49	0.52	0.49	0.48	0.53	0.48	0.45	0.52	0.47	0.43	0.52	0.46	0.41	0.38
9	0.48	0.45	0.44	0.48	0.45	0.43	0.49	0.44	0.41	0.48	0.43	0.40	0.48	0.42	0.38	0.34
10	0.44	0.42	0.40	0.44	0.41	0.40	0.45	0.41	0.38	0.45	0.40	0.36	0.45	0.39	0.34	0.32

Indoor Budgetary Estimate Chart



UGR综合眩光指数表

Ceiling	70	70	50	50	30	70	70	50	50	30	
Wall	50	30	50	30	30	50	30	50	30	30	
Floor	20	20	20	20	20	20	20	20	20	20	
Room Size	Left to light axis direction of observation					Direction of light axis parallel observation					
X	Y										
2H	2H	14.7	15.9	15.0	16.0	16.3	14.5	15.8	14.9	16.0	16.4
	3H	16.2	17.5	16.6	17.8	17.9	16.2	17.4	16.5	17.9	18.0
	4H	17.0	18.0	17.4	18.7	18.7	16.9	18.0	17.2	18.6	18.7
	6H	17.5	18.6	18.0	18.8	19.0	17.5	18.5	17.8	18.9	19.0
	8H	17.8	18.9	18.1	19.0	19.4	17.8	18.8	18.0	18.9	19.2
4H	12H	17.9	18.7	18.1	19.2	19.5	17.7	18.7	18.0	19.2	19.5
	2H	15.7	16.6	15.8	16.8	17.0	15.7	16.4	15.6	16.7	17.1
	3H	17.5	18.3	17.8	18.5	18.8	17.3	18.3	17.7	18.5	18.8
	4H	18.1	19.0	18.6	19.0	19.5	18.1	18.9	18.3	19.0	19.5
	6H	18.8	19.5	19.2	19.7	20.0	18.7	19.4	19.1	19.8	20.2
8H	8H	19.1	19.7	19.5	20.0	20.2	19.0	19.5	19.3	20.0	20.4
	12H	19.2	19.8	19.6	20.1	20.5	19.2	19.8	19.5	20.1	20.6
	4H	18.6	19.2	18.8	19.4	19.8	18.4	19.1	18.7	19.3	19.9
	6H	19.4	19.9	19.8	20.3	20.6	19.2	19.8	19.7	20.2	20.5
	8H	19.7	20.2	20.1	20.5	20.9	19.6	20.1	20.0	20.5	20.9
12H	12H	19.9	20.4	20.4	20.8	21.2	19.9	20.3	20.4	20.7	21.2
	4H	18.5	19.2	19.0	19.5	19.8	18.5	19.1	18.9	19.6	19.9
	6H	19.5	20.0	19.8	20.2	20.7	19.5	19.9	19.8	20.3	20.6
	8H	19.9	20.4	20.4	20.5	21.1	19.8	20.2	20.2	20.5	21.0