

Luminaire Property

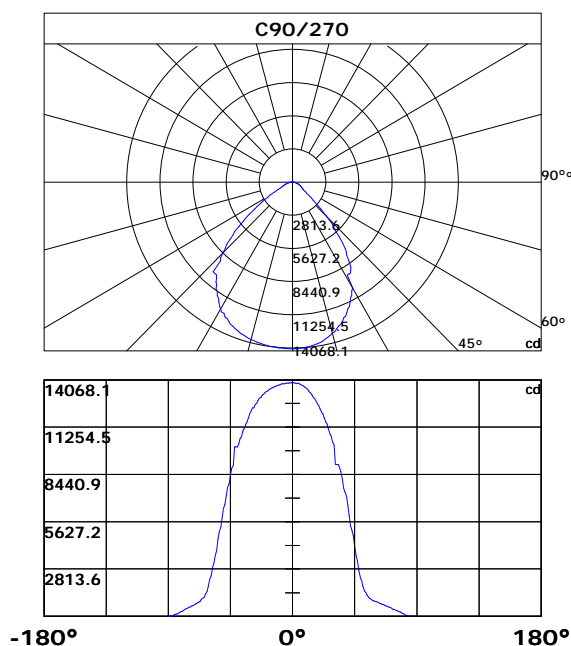
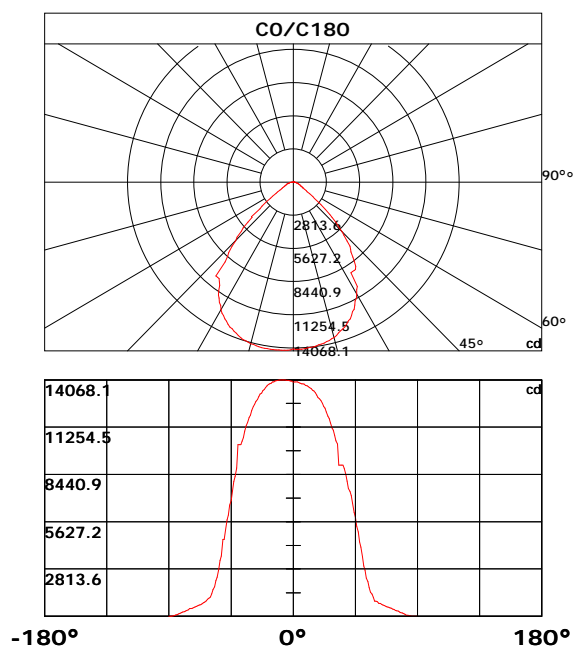
Luminaire Description: UFO-200W-2
 Luminaire Category:
 Lamp Category:
 Lamp Description:
 Number of Lamp:
 Lamp Lumens(lm): 25209.74
 Luminous Length(m):
 Luminous Width(m):
 Luminous Height(m):

Voltage: 231.9 V
 Current: 0.864 A
 Power: 199.12 W
 Power Factor: 0.994
 Test Lab:
 Photometric Type: Type C

Photometric Results

CIE Class: Direct
 Measurement Flux: 25209.74 lm
 Efficiency: 126.6058 lm/W
 Central Intensity: 13916.3cd
 Max. Intensity: 14068.141cd
 Field Angle(10%Imax): 112.87, 109.24

Max.Intensity Angle: C:180.0 G:8.0
 Beam Angle(50%Imax): 85.51, 81.98
 Luminaire Efficacy Rating(LER) : 100.00%
 Upward Ratio: 0.0%
 Downward Ratio: 100.0%



Light intensity data Unit[cd]

C\G	G0.0	G1.0	G2.0	G3.0	G4.0	G5.0	G6.0	G7.0	G8.0	G9.0
C0.0	13916.3	13953.7	13946.6	13943.0	13900.1	13882.2	13842.9	13832.1	13803.5	13732.0
C30.0	13916.3	13814.2	13796.4	13792.8	13757.0	13721.3	13710.5	13667.6	13621.1	13567.5
C60.0	13916.3	13871.5	13867.9	13857.2	13846.4	13825.0	13774.9	13757.0	13703.4	13646.2
C90.0	13916.3	13885.8	13875.0	13853.6	13860.7	13821.4	13782.1	13728.4	13692.7	13624.7
C120.0	13916.3	13928.7	13939.4	13957.3	13939.4	13932.3	13910.8	13900.1	13867.9	13832.1
C150.0	13916.3	13989.5	13989.5	13996.6	14003.8	13989.5	13982.3	13964.4	13928.7	13892.9
C180.0	13916.3	13993.0	14007.3	14018.1	14036.0	14046.7	14053.8	14061.0	14068.1	14061.0
C210.0	13916.3	13857.2	13860.7	13871.5	13882.2	13892.9	13900.1	13907.2	13910.8	13907.2
C240.0	13916.3	13875.0	13871.5	13878.6	13882.2	13864.3	13864.3	13864.3	13842.9	13832.1
C270.0	13916.3	13896.5	13889.3	13867.9	13871.5	13864.3	13835.7	13821.4	13825.0	13782.1
C300.0	13916.3	13907.2	13885.8	13853.6	13853.6	13825.0	13782.1	13771.3	13739.1	13689.1
C330.0	13916.3	13946.6	13928.7	13917.9	13907.2	13885.8	13871.5	13857.2	13842.9	13792.8
C360.0	13916.3	13953.7	13946.6	13943.0	13900.1	13882.2	13842.9	13832.1	13803.5	13732.0
C\G	G10.0	G11.0	G12.0	G13.0	G14.0	G15.0	G16.0	G17.0	G18.0	G19.0
C0.0	13714.1	13664.0	13599.7	13556.8	13456.6	13413.7	13292.1	13156.3	13016.8	12934.5
C30.0	13496.0	13424.5	13381.5	13270.7	13227.8	13099.0	12963.1	12895.2	12752.2	12659.2
C60.0	13603.3	13521.0	13431.6	13374.4	13267.1	13202.7	13077.6	12938.1	12866.6	12716.4
C90.0	13571.1	13485.2	13360.1	13288.6	13170.6	13031.1	12956.0	12795.1	12634.1	12534.0
C120.0	13785.6	13707.0	13685.5	13589.0	13531.7	13420.9	13367.2	13245.7	13099.0	13016.8
C150.0	13875.0	13817.8	13778.5	13685.5	13656.9	13542.5	13431.6	13381.5	13238.5	13177.7
C180.0	14068.1	14046.7	14032.4	14003.8	13946.6	13946.6	13882.2	13832.1	13796.4	13710.5
C210.0	13917.9	13910.8	13896.5	13885.8	13853.6	13853.6	13807.1	13749.9	13710.5	13646.2
C240.0	13828.5	13803.5	13764.2	13749.9	13681.9	13681.9	13639.0	13599.7	13528.2	13438.8
C270.0	13757.0	13746.3	13699.8	13667.6	13624.7	13581.8	13538.9	13485.2	13413.7	13378.0
C300.0	13674.8	13631.9	13563.9	13542.5	13463.8	13374.4	13320.7	13213.5	13152.7	13034.7
C330.0	13753.5	13753.5	13681.9	13642.6	13599.7	13506.7	13456.6	13363.7	13313.6	13195.6
C360.0	13714.1	13664.0	13599.7	13556.8	13456.6	13413.7	13292.1	13156.3	13016.8	12934.5
C\G	G20.0	G21.0	G22.0	G23.0	G24.0	G25.0	G26.0	G27.0	G28.0	G29.0
C0.0	12845.1	12673.5	12480.4	12380.3	12155.0	11908.2	11783.1	11511.3	11214.5	11075.0
C30.0	12494.7	12298.0	12187.1	11965.4	11847.4	11586.4	11318.2	11157.2	10835.4	10674.5
C60.0	12716.4	12466.1	12265.8	12172.8	11965.4	11818.8	11582.8	11450.5	11164.4	10867.6
C90.0	12344.5	12133.5	12037.0	11804.5	11557.8	11429.0	11153.7	10849.7	10703.1	10377.7
C120.0	12873.7	12702.1	12598.4	12419.6	12190.7	12104.9	11854.6	11597.1	11471.9	11164.4
C150.0	12920.2	12845.1	12655.6	12562.6	12458.9	12222.9	11969.0	11836.7	11561.3	11404.0
C180.0	13610.4	13488.8	13424.5	13281.4	13224.2	13081.2	12898.8	12795.1	12612.7	12484.0
C210.0	13603.3	13513.9	13392.3	13335.1	13184.9	13013.2	12948.8	12752.2	12662.8	12437.5
C240.0	13395.8	13224.2	13224.2	13095.5	12934.5	12870.2	12694.9	12512.6	12394.6	12201.4
C270.0	13295.7	13199.2	13138.4	13013.2	12963.1	12820.1	12662.8	12605.5	12405.3	12405.3
C300.0	12895.2	12827.3	12677.1	12602.0	12419.6	12237.2	12144.2	11926.1	11808.1	11579.2
C330.0	13127.6	13002.5	12848.7	12755.7	12573.4	12469.7	12283.7	12076.3	11958.3	11729.4
C360.0	12845.1	12673.5	12480.4	12380.3	12155.0	11908.2	11783.1	11511.3	11214.5	11075.0

Light intensity data Unit[cd]

C\G	G30.0	G31.0	G32.0	G33.0	G34.0	G35.0	G36.0	G37.0	G38.0	G39.0
C0.0	10756.7	10434.9	10256.1	9000.9	9000.9	9000.9	9000.9	8807.8	8432.3	8042.5
C30.0	10345.5	10163.1	9051.0	9051.0	9051.0	8861.4	8482.4	8289.3	7606.2	7470.3
C60.0	10706.7	10374.1	10191.7	10191.7	10191.7	10191.7	8882.9	8460.9	8242.8	7795.8
C90.0	10184.6	9036.7	9036.7	9036.7	8843.5	8607.5	8135.5	7602.7	7402.4	7130.6
C120.0	10856.9	10710.2	10356.2	10356.2	10356.2	10356.2	10356.2	8718.4	8482.4	8253.5
C150.0	11082.1	10731.7	10560.0	10177.4	9129.6	9129.6	9129.6	8664.7	8414.4	7591.9
C180.0	12247.9	11976.2	11829.5	11529.2	11361.1	11007.1	10631.6	10417.0	10202.4	10202.4
C210.0	12212.2	11951.1	11808.1	11529.2	11218.0	11050.0	10703.1	10520.7	10141.6	10141.6
C240.0	11836.7	11836.7	11554.2	11253.8	11089.3	10774.6	10606.5	10252.5	9072.4	9072.4
C270.0	12226.5	12019.1	11800.9	11561.3	11425.4	11157.2	11028.5	10713.8	10560.0	10248.9
C300.0	11439.8	11193.0	10928.4	10778.2	10477.8	10334.8	9011.6	9011.6	9011.6	9011.6
C330.0	11475.5	11475.5	11060.7	10781.8	10628.0	10324.0	10170.3	10170.3	10170.3	9147.5
C360.0	10756.7	10434.9	10256.1	9000.9	9000.9	9000.9	9000.9	8807.8	8432.3	8042.5
C\G	G40.0	G41.0	G42.0	G43.0	G44.0	G45.0	G46.0	G47.0	G48.0	G49.0
C0.0	7606.2	7427.4	7191.4	6723.0	6172.2	5893.3	5349.8	5020.8	4420.0	4123.2
C30.0	7245.1	6765.9	6243.8	5972.0	5385.5	4763.3	4452.2	3833.5	3529.9	2960.2
C60.0	7320.2	7062.7	6529.8	5925.5	5635.8	5017.2	4584.5	4584.5	3501.7	3208.1
C90.0	6583.5	5997.0	5403.4	5095.9	4791.9	4184.0	3590.3	3310.0	2755.7	2311.9
C120.0	7491.8	7216.4	6651.4	6651.4	5750.3	5442.7	4813.4	4580.9	3872.9	3297.8
C150.0	7398.8	7119.9	6544.2	6243.8	5643.0	4970.7	4656.0	4040.9	3737.0	3171.2
C180.0	10202.4	8822.1	8300.0	8021.1	7477.5	6905.3	6619.2	6018.5	5725.2	5103.0
C210.0	10141.6	9090.3	8865.0	8353.6	8114.0	7624.1	7102.0	6833.8	6283.1	6000.6
C240.0	9072.4	9072.4	8629.0	8196.3	7595.5	7223.6	7223.6	6429.7	6150.8	5875.4
C270.0	10077.3	10077.3	10077.3	8986.6	8800.6	8378.7	7895.9	7667.0	7177.1	6672.9
C300.0	8832.8	8657.6	8282.1	7588.4	7588.4	7277.2	6780.2	6544.2	6029.2	5510.7
C330.0	8954.4	8586.1	8396.5	8010.3	7591.9	7377.4	6919.6	6683.6	6179.4	5882.6
C360.0	7606.2	7427.4	7191.4	6723.0	6172.2	5893.3	5349.8	5020.8	4420.0	4123.2
C\G	G50.0	G51.0	G52.0	G53.0	G54.0	G55.0	G56.0	G57.0	G58.0	G59.0
C0.0	3554.6	3001.7	2744.6	2274.7	2069.5	1706.1	1427.6	1313.5	1131.8	904.7
C30.0	2424.9	2230.4	1844.9	1668.9	1410.7	1222.3	1149.3	1037.4	890.4	890.4
C60.0	2676.0	2436.0	2020.8	1689.7	1554.9	1342.8	1260.2	1134.0	1044.2	1008.4
C90.0	2111.7	1772.3	1515.9	1415.0	1250.5	1135.8	1053.5	1022.7	914.4	914.4
C120.0	3026.4	2533.6	2117.7	1938.2	1637.5	1410.4	1320.3	1184.0	1085.3	1048.9
C150.0	2654.9	2423.5	2020.1	1693.6	1442.6	1341.7	1255.2	1121.1	1068.2	896.9
C180.0	4570.2	4570.2	3597.5	3324.3	2802.9	2334.4	2126.3	1751.2	1592.1	1331.4
C210.0	5442.7	4859.8	4580.9	4037.3	3772.7	3241.3	2748.9	2517.9	2094.8	1721.9
C240.0	5285.4	4999.3	4441.4	4158.9	3626.1	3110.8	2864.1	2385.2	1960.7	1773.4
C270.0	6408.3	5854.0	5296.1	5010.0	4588.1	3908.6	3636.8	3124.4	2886.6	2411.3
C300.0	5235.3	4677.5	4402.1	3844.2	3305.0	3044.3	2552.6	2323.4	1913.9	1734.7
C330.0	5335.5	4766.9	4595.2	4595.2	3665.4	3124.4	2623.0	2390.2	1978.3	1797.3
C360.0	3554.6	3001.7	2744.6	2274.7	2069.5	1706.1	1427.6	1313.5	1131.8	904.7

Light intensity data Unit[cd]

C\G	G60.0	G61.0	G62.0	G63.0	G64.0	G65.0	G66.0	G67.0	G68.0	G69.0
C0.0	904.7	865.4	759.6	759.6	712.0	663.4	640.5	597.9	555.7	535.7
C30.0	890.4	837.9	761.0	761.0	722.0	701.6	660.5	621.2	601.8	562.5
C60.0	1008.4	1008.4	867.9	820.7	796.7	749.9	727.0	683.0	639.4	619.4
C90.0	891.9	866.5	818.6	759.9	751.3	707.3	685.9	644.0	621.2	580.0
C120.0	1014.5	1014.5	901.9	877.6	804.3	777.8	734.9	710.6	668.4	626.5
C150.0	896.9	896.9	846.8	822.1	759.2	723.8	700.9	655.8	613.6	593.6
C180.0	1144.7	1070.7	1009.2	914.8	842.9	811.4	752.8	700.5	675.9	629.0
C210.0	1563.4	1283.8	1184.0	1029.2	1029.2	842.5	809.3	749.5	697.7	672.7
C240.0	1452.6	1220.1	1132.5	904.7	904.7	865.0	758.5	737.0	708.8	651.9
C270.0	2193.2	1796.6	1470.5	1323.9	1133.6	1066.0	1008.1	881.9	847.2	783.9
C300.0	1431.8	1217.6	1139.0	1015.2	880.1	845.4	760.6	760.6	728.4	703.0
C330.0	1493.4	1252.0	1158.6	1013.1	908.3	864.0	793.2	733.8	703.0	651.9
C360.0	904.7	865.4	759.6	759.6	712.0	663.4	640.5	597.9	555.7	535.7
C\G	G70.0	G71.0	G72.0	G73.0	G74.0	G75.0	G76.0	G77.0	G78.0	G79.0
C0.0	495.3	474.2	431.6	410.2	345.5	324.2	302.2	260.0	216.6	194.7
C30.0	520.7	496.0	450.6	402.3	377.6	329.6	279.5	255.8	209.9	165.0
C60.0	577.5	537.1	516.4	474.9	458.1	408.0	361.5	314.9	290.6	241.5
C90.0	538.2	516.4	469.2	396.2	396.2	346.9	321.6	270.4	245.5	195.5
C120.0	604.7	562.5	540.3	496.7	473.1	458.8	377.3	354.5	305.4	281.5
C150.0	551.1	510.3	488.1	443.8	394.8	369.4	319.8	296.4	248.5	200.0
C180.0	586.1	565.4	525.7	484.9	463.5	458.1	377.3	355.8	311.3	268.2
C210.0	625.8	602.2	580.7	534.6	489.2	458.4	458.4	375.1	351.8	299.6
C240.0	626.2	575.4	525.0	499.9	447.4	420.2	368.7	319.6	295.3	248.3
C270.0	753.8	697.7	644.0	616.5	563.9	536.8	478.8	458.1	397.3	344.3
C300.0	649.1	595.1	567.2	511.4	454.9	425.5	370.5	318.1	292.2	242.2
C330.0	604.4	580.7	537.1	491.3	469.2	457.7	399.4	352.1	328.2	282.4
C360.0	495.3	474.2	431.6	410.2	345.5	324.2	302.2	260.0	216.6	194.7
C\G	G80.0	G81.0	G82.0	G83.0	G84.0	G85.0	G86.0	G87.0	G88.0	G89.0
C0.0	150.4	129.3	71.6	71.6	37.8	23.3	2.9	3.1	3.3	3.6
C30.0	144.1	75.2	75.2	49.1	17.5	4.7	3.0	2.1	1.7	1.6
C60.0	191.4	165.6	121.9	101.7	62.8	47.1	13.2	1.6	1.5	1.5
C90.0	148.8	125.9	74.2	46.6	29.1	1.5	1.3	1.3	1.4	1.5
C120.0	235.0	187.1	164.0	119.3	119.3	58.0	46.5	1.8	1.5	1.4
C150.0	176.1	132.6	112.7	72.2	36.4	20.2	10.7	5.9	3.6	2.5
C180.0	246.5	204.4	183.5	142.5	104.2	85.7	49.0	17.5	1.5	1.2
C210.0	250.1	226.6	182.4	162.4	124.5	88.4	71.7	46.2	5.4	2.9
C240.0	224.9	177.8	155.6	113.9	74.7	60.5	31.8	11.6	2.7	2.9
C270.0	292.3	266.7	214.1	159.8	136.4	115.4	77.7	46.7	8.7	3.0
C300.0	193.1	169.8	125.6	74.3	67.9	34.7	22.9	3.5	2.9	3.1
C330.0	236.8	211.1	167.9	145.3	105.9	70.1	53.7	45.9	3.1	3.2
C360.0	150.4	129.3	71.6	71.6	37.8	23.3	2.9	3.1	3.3	3.6

Light intensity data Unit[cd]

C\G	G90.0									
C0.0	3.8									
C30.0	1.4									
C60.0	1.5									
C90.0	1.5									
C120.0	1.3									
C150.0	1.3									
C180.0	1.2									
C210.0	3.1									
C240.0	3.1									
C270.0	3.3									
C300.0	3.3									
C330.0	3.8									
C360.0	3.8									

Zonal Luminous Flux Data

Gamma [°]	I _{mean} [cd]	Zonal Flux [lm]	Sum Flux [lm]	Zonal Flux [%]	Sum Flux [%]
0.0	13916.30	0.00	0.00	0.00	0.00
0.0-1.0	13909.90	13.31	13.31	0.05	0.05
1.0-2.0	13904.84	39.92	53.24	0.16	0.21
2.0-3.0	13900.66	66.50	119.74	0.26	0.47
3.0-4.0	13895.00	93.04	212.78	0.37	0.84
4.0-5.0	13879.21	119.48	332.26	0.47	1.32
5.0-6.0	13859.24	145.77	478.04	0.58	1.90
6.0-7.0	13844.34	171.96	649.99	0.68	2.58
7.0-8.0	13820.50	197.99	847.98	0.79	3.36
8.0-9.0	13779.97	223.69	1071.67	0.89	4.25
9.0-10.0	13753.75	249.17	1320.84	0.99	5.24
10.0-11.0	13709.35	274.41	1595.25	1.09	6.33
11.0-12.0	13656.30	299.15	1894.40	1.19	7.51
12.0-13.0	13604.75	323.52	2217.92	1.28	8.80
13.0-14.0	13540.08	347.45	2565.37	1.38	10.18
14.0-15.0	13471.24	370.82	2936.19	1.47	11.65
15.0-16.0	13394.36	393.66	3329.85	1.56	13.21
16.0-17.0	13304.66	415.78	3745.63	1.65	14.86
17.0-18.0	13210.19	437.17	4182.80	1.73	16.59
18.0-19.0	13120.19	458.09	4640.89	1.82	18.41
19.0-20.0	13010.23	478.26	5119.15	1.90	20.31
20.0-21.0	12864.50	496.85	5616.00	1.97	22.28
21.0-22.0	12744.11	514.62	6130.61	2.04	24.32
22.0-23.0	12615.67	532.12	6662.73	2.11	26.43
23.0-24.0	12456.24	548.16	7210.89	2.17	28.60
24.0-25.0	12296.81	562.83	7773.72	2.23	30.84
25.0-26.0	12107.88	576.08	8349.80	2.29	33.12
26.0-27.0	11922.52	587.91	8937.71	2.33	35.45
27.0-28.0	11732.69	598.90	9536.60	2.38	37.83
28.0-29.0	11533.32	608.70	10145.31	2.41	40.24
29.0-30.0	11280.92	615.98	10761.29	2.44	42.69
30.0-31.0	10991.85	619.82	11381.11	2.46	45.15
31.0-32.0	10702.79	621.53	12002.63	2.47	47.61
32.0-33.0	10437.27	622.79	12625.43	2.47	50.08
33.0-34.0	10231.05	625.48	13250.91	2.48	52.56
34.0-35.0	10066.25	630.36	13881.27	2.50	55.06
35.0-36.0	9678.25	628.67	14509.94	2.49	57.56
36.0-37.0	9302.47	619.04	15128.99	2.46	60.01
37.0-38.0	8978.24	610.19	15739.17	2.42	62.43
38.0-39.0	8675.77	602.58	16341.75	2.39	64.82
39.0-40.0	8410.55	595.91	16937.66	2.36	67.19

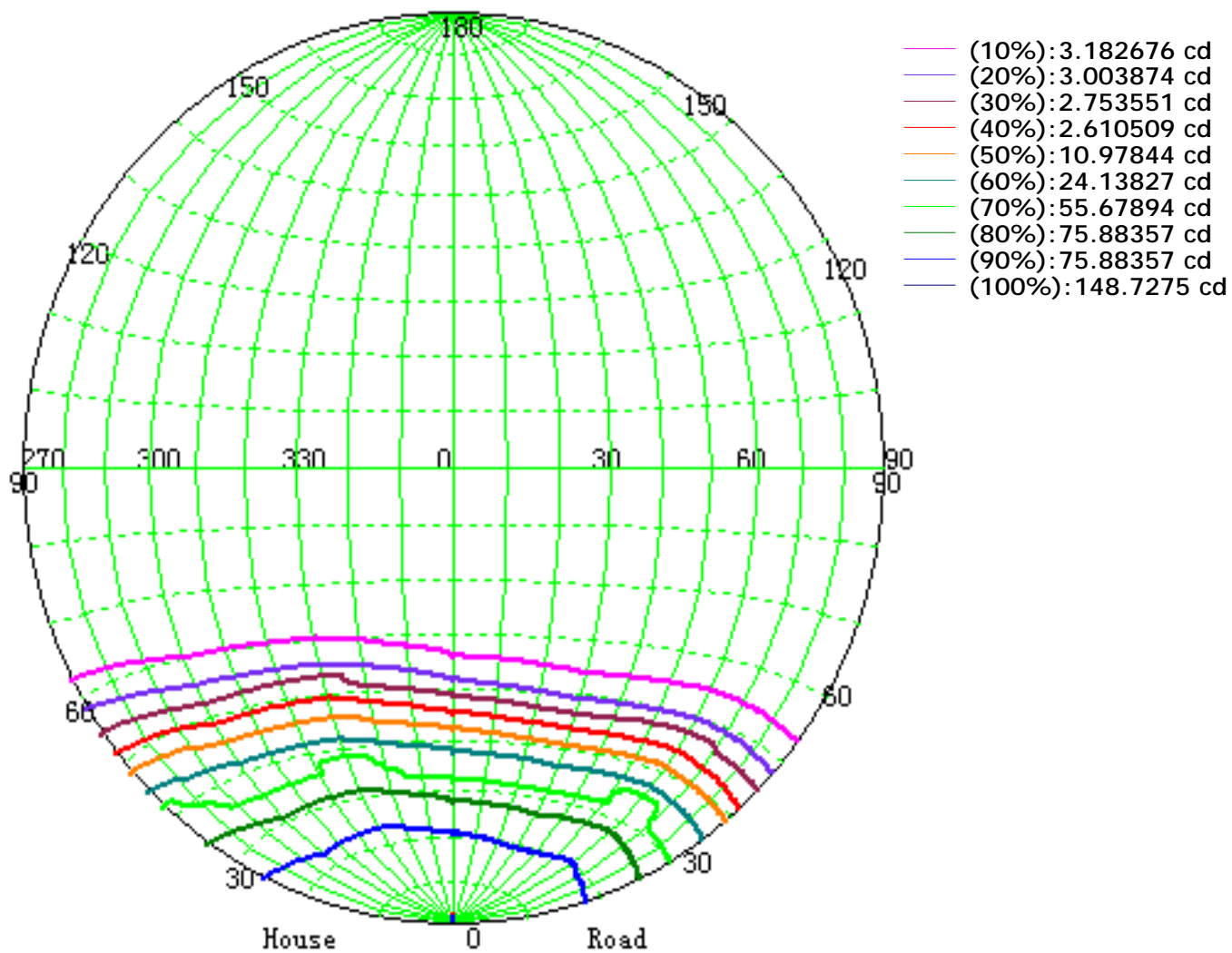
Zonal Luminous Flux Data

Gamma [°]	I _{mean} [cd]	Zonal Flux [lm]	Sum Flux [lm]	Zonal Flux [%]	Sum Flux [%]
40.0-41.0	7991.26	584.06	17521.72	2.32	69.50
41.0-42.0	7592.83	566.20	18087.92	2.25	71.75
42.0-43.0	7147.31	546.02	18633.94	2.17	73.92
43.0-44.0	6712.23	523.10	19157.04	2.07	75.99
44.0-45.0	6254.79	498.34	19655.38	1.98	77.97
45.0-46.0	5832.22	472.70	20128.08	1.88	79.84
46.0-47.0	5462.28	449.21	20577.29	1.78	81.62
47.0-48.0	4946.83	420.79	20998.08	1.67	83.29
48.0-49.0	4509.80	388.34	21386.42	1.54	84.83
49.0-50.0	4060.47	357.32	21743.74	1.42	86.25
50.0-51.0	3677.09	327.37	22071.11	1.30	87.55
51.0-52.0	3264.78	297.88	22368.99	1.18	88.73
52.0-53.0	2970.86	271.25	22640.24	1.08	89.81
53.0-54.0	2593.82	245.27	22885.51	0.97	90.78
54.0-55.0	2243.58	215.93	23101.45	0.86	91.64
55.0-56.0	2001.48	191.82	23293.27	0.76	92.40
56.0-57.0	1775.41	172.69	23465.96	0.69	93.08
57.0-58.0	1546.73	153.63	23619.59	0.61	93.69
58.0-59.0	1369.47	136.33	23755.92	0.54	94.23
59.0-60.0	1240.50	123.30	23879.22	0.49	94.72
60.0-61.0	1110.87	112.21	23991.44	0.45	95.17
61.0-62.0	1004.12	101.91	24093.35	0.40	95.57
62.0-63.0	916.81	93.42	24186.77	0.37	95.94
63.0-64.0	853.69	86.88	24273.65	0.34	96.29
64.0-65.0	801.51	81.91	24355.57	0.32	96.61
65.0-66.0	752.67	77.54	24433.11	0.31	96.92
66.0-67.0	706.33	73.36	24506.47	0.29	97.21
67.0-68.0	671.76	69.81	24576.28	0.28	97.49
68.0-69.0	634.18	66.62	24642.90	0.26	97.75
69.0-70.0	594.40	63.10	24706.00	0.25	98.00
70.0-71.0	559.41	59.64	24765.63	0.24	98.24
71.0-72.0	523.00	56.28	24821.92	0.22	98.46
72.0-73.0	480.23	52.46	24874.38	0.21	98.67
73.0-74.0	444.45	48.61	24922.99	0.19	98.86
74.0-75.0	416.14	45.47	24968.46	0.18	99.04
75.0-76.0	367.93	41.62	25010.08	0.17	99.21
76.0-77.0	327.56	37.08	25047.16	0.15	99.36
77.0-78.0	291.06	33.11	25080.28	0.13	99.49
78.0-79.0	246.94	28.91	25109.19	0.11	99.60
79.0-80.0	207.47	24.50	25133.68	0.10	99.70
80.0-81.0	172.68	20.56	25154.24	0.08	99.78

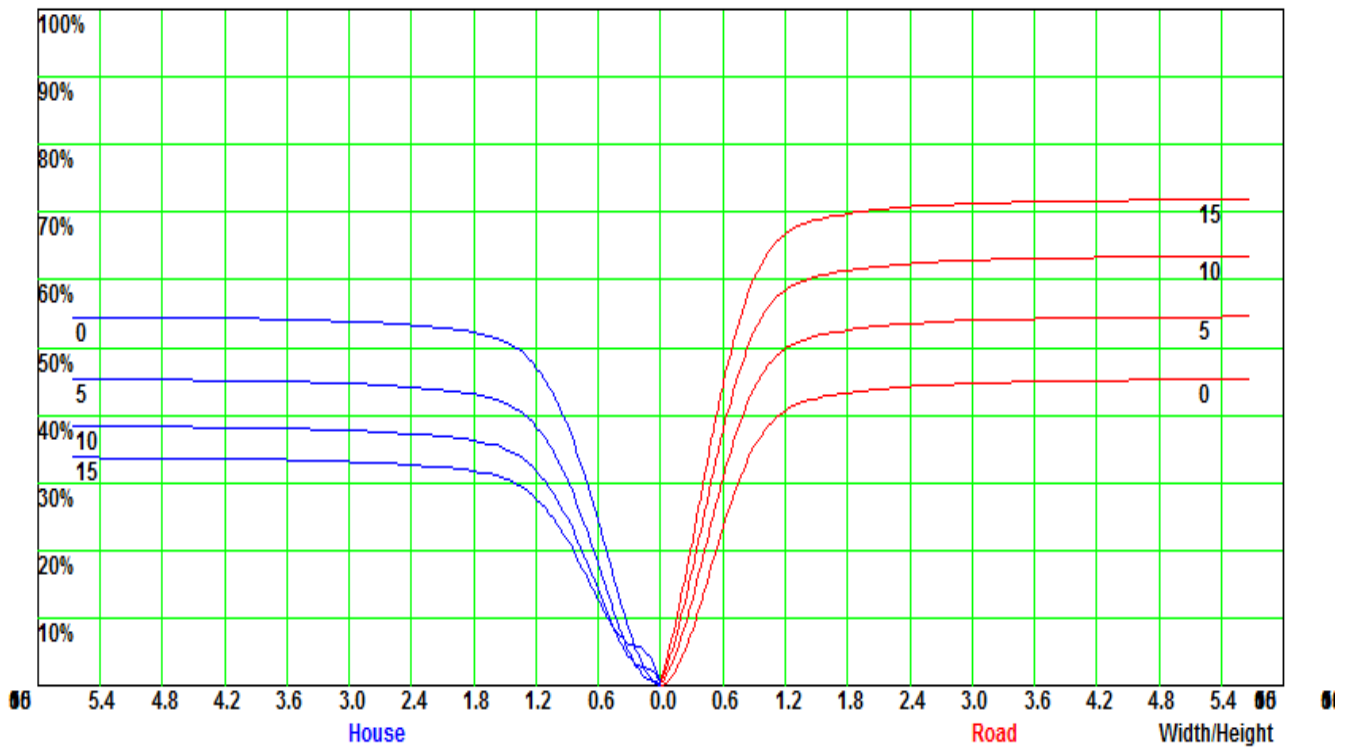
Zonal Luminous Flux Data

Gamma [°]	I _{mean} [cd]	Zonal Flux [lm]	Sum Flux [lm]	Zonal Flux [%]	Sum Flux [%]
81.0-82.0	137.39	16.81	25171.05	0.07	99.85
82.0-83.0	104.89	13.17	25184.22	0.05	99.90
83.0-84.0	76.37	9.87	25194.10	0.04	99.94
84.0-85.0	50.81	6.94	25201.04	0.03	99.97
85.0-86.0	32.03	4.53	25205.56	0.02	99.98
86.0-87.0	15.60	2.61	25208.17	0.01	99.99
87.0-88.0	3.12	1.03	25209.19	0.00	100.00
88.0-89.0	2.35	0.30	25209.49	0.00	100.00
89.0-90.0	2.38	0.26	25209.75	0.00	100.00

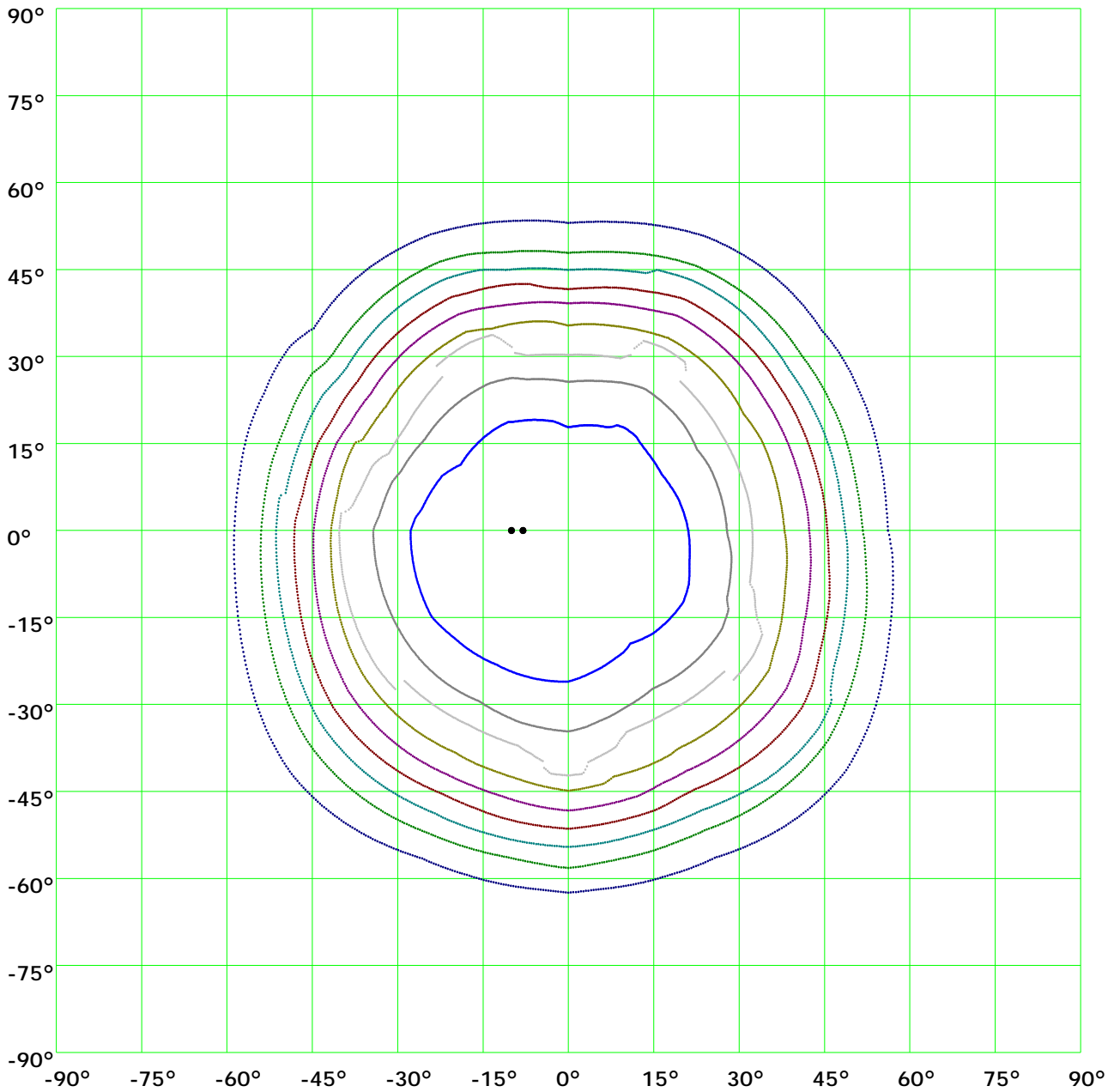
Iso-Candela [cd]



Coefficient Utilization Curve

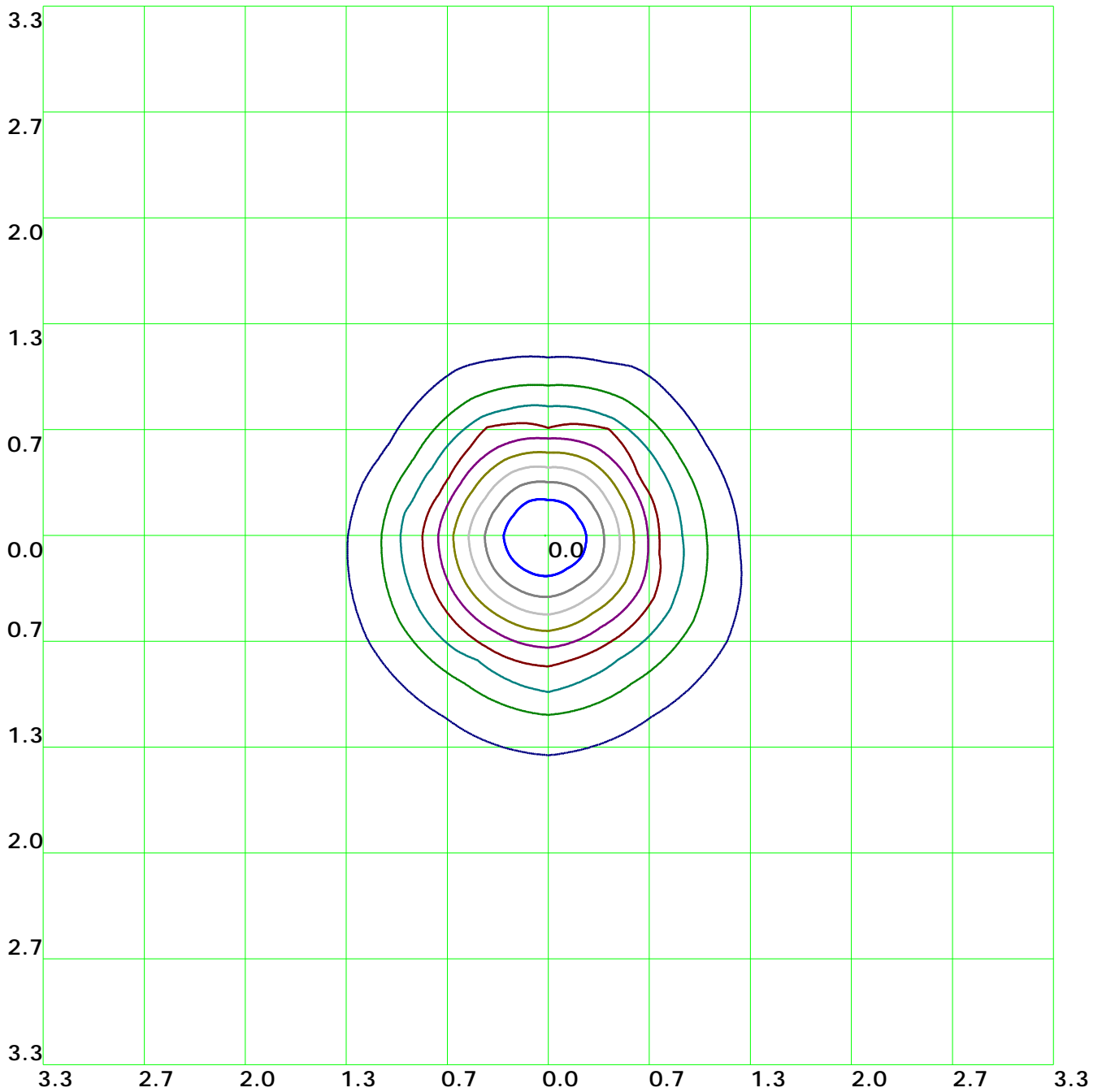


Isocandela(rectangle)



— (10%): 1406.8cd	— (20%): 2813.6cd	— (30%): 4220.4cd	— (40%): 5627.3cd
— (50%): 7034.1cd	— (60%): 8440.9cd	— (70%): 9847.7cd	— (80%): 11254.5cd
— (90%): 12661.3cd	— (100%): 14068.1cd		

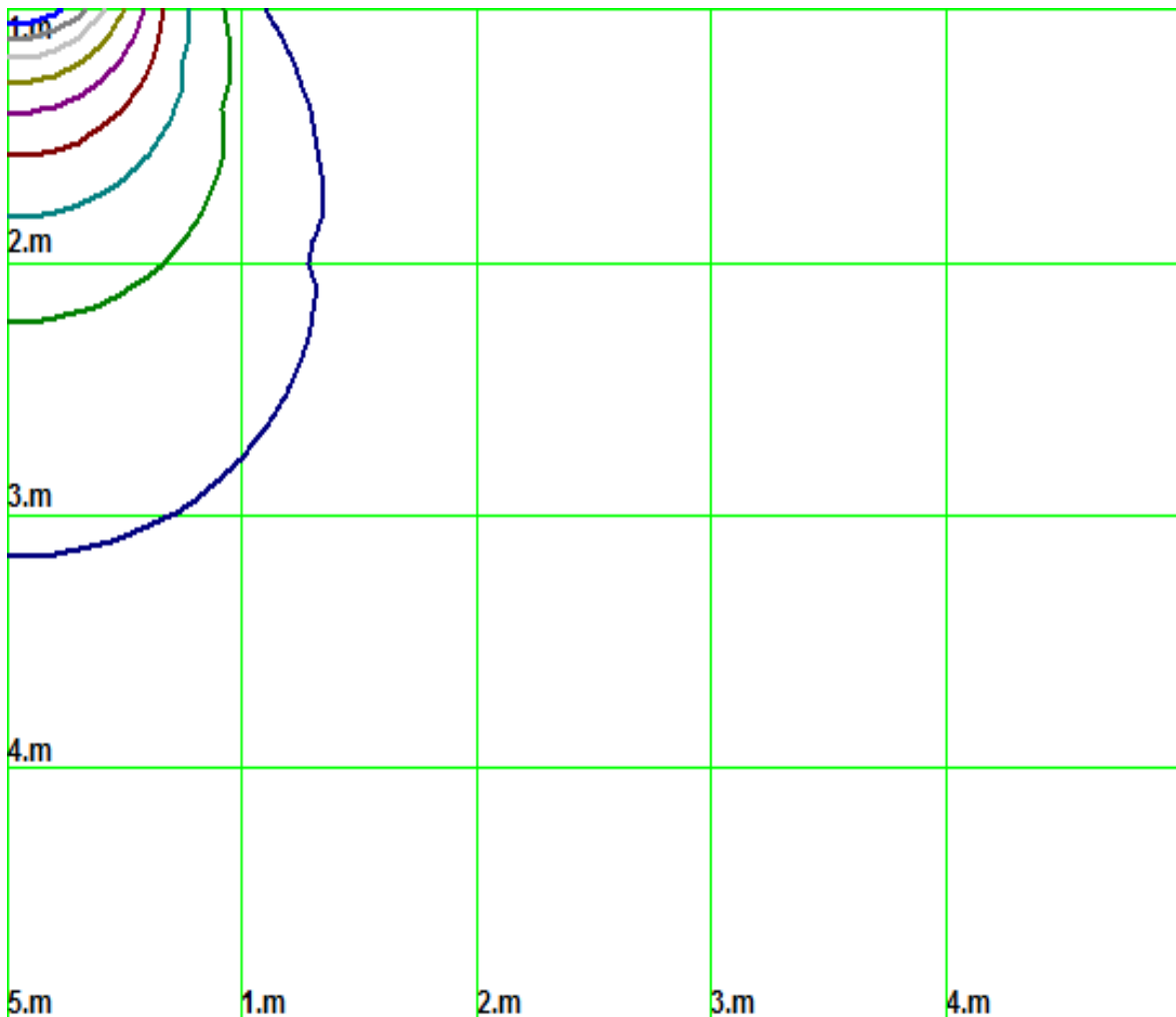
Isolx curve



Height: 1 m

- (10%): 1406.8lx — (20%): 2813.6lx — (30%): 4220.4lx — (40%): 5627.3lx
- (50%): 7034.1lx — (60%): 8440.9lx — (70%): 9847.7lx — (80%): 11254.5lx
- (90%): 12661.3lx — (100%): 14054.1lx

Space Isolx Curve



(10%): 1406.8lx (20%): 2813.6lx (30%): 4220.4lx (40%): 5627.3lx
 (50%): 7034.1lx (60%): 8440.9lx (70%): 9847.7lx (80%): 11254.5lx
 (90%): 12661.3lx (100%): 14054.1lx

Luminance Limiting Curve

Diameter: 0mm

Length: 0mm

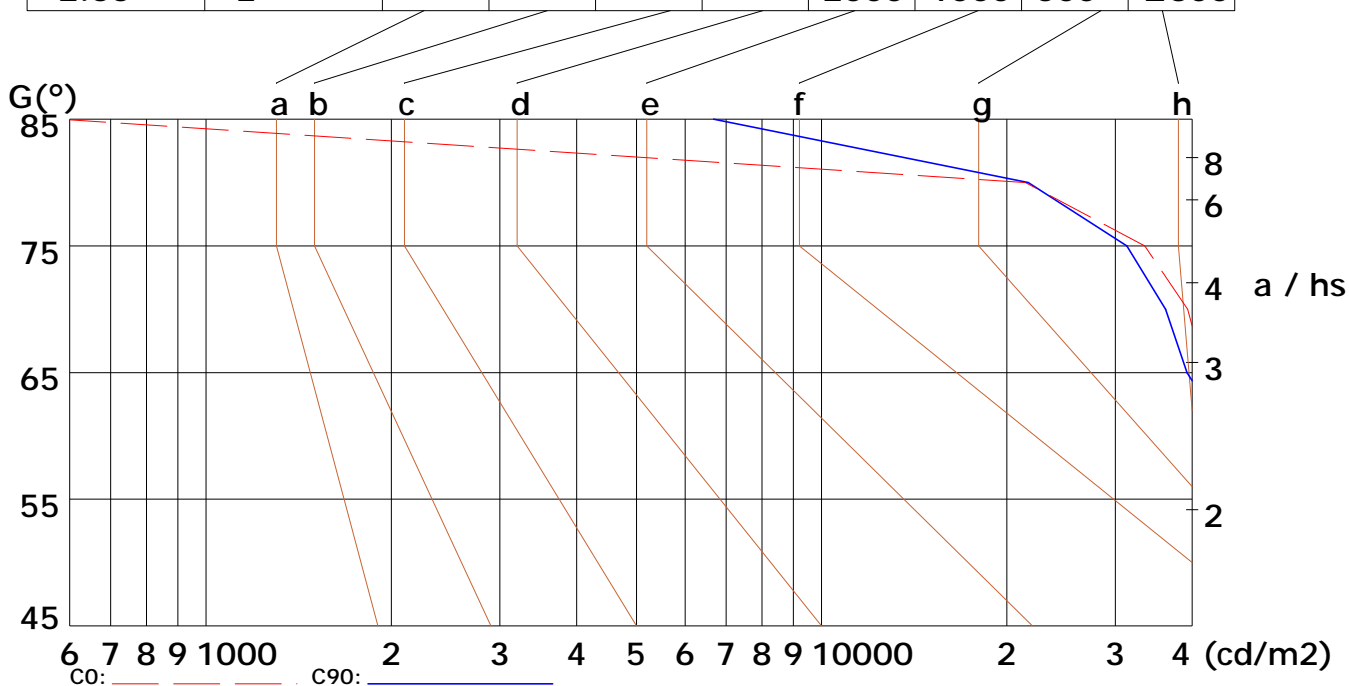
Width: 0mm

Height: 0mm

(cd/m²)

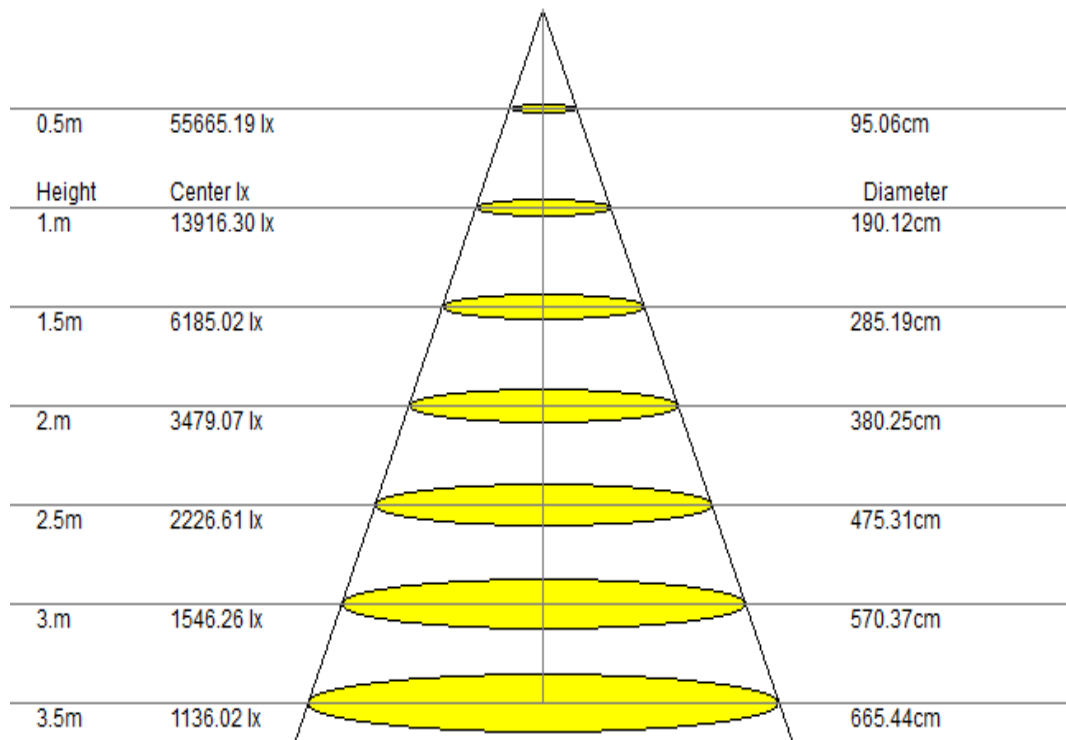
γ	45°	50°	55°	60°	65°	70°	75°	80°	85°
C0	14792	82129	49503	44593	41843	39339	33506	21417	421
C90	20836	13824	974364	45237	39241	36203	31316	21659	6678

Glare	Quality	Service Values Illuminance (lx)									
1.15	A	2000	1000	500	≤300						
1.5	B		2000	1000	500	≤300					
1.85	C			2000	1000	500	≤300				
2.2	D				2000	1000	500	≤300			
2.55	E					2000	1000	500	≤300		



Lum. Limiting Curve (C0/C90)

Lux-Distance Curve

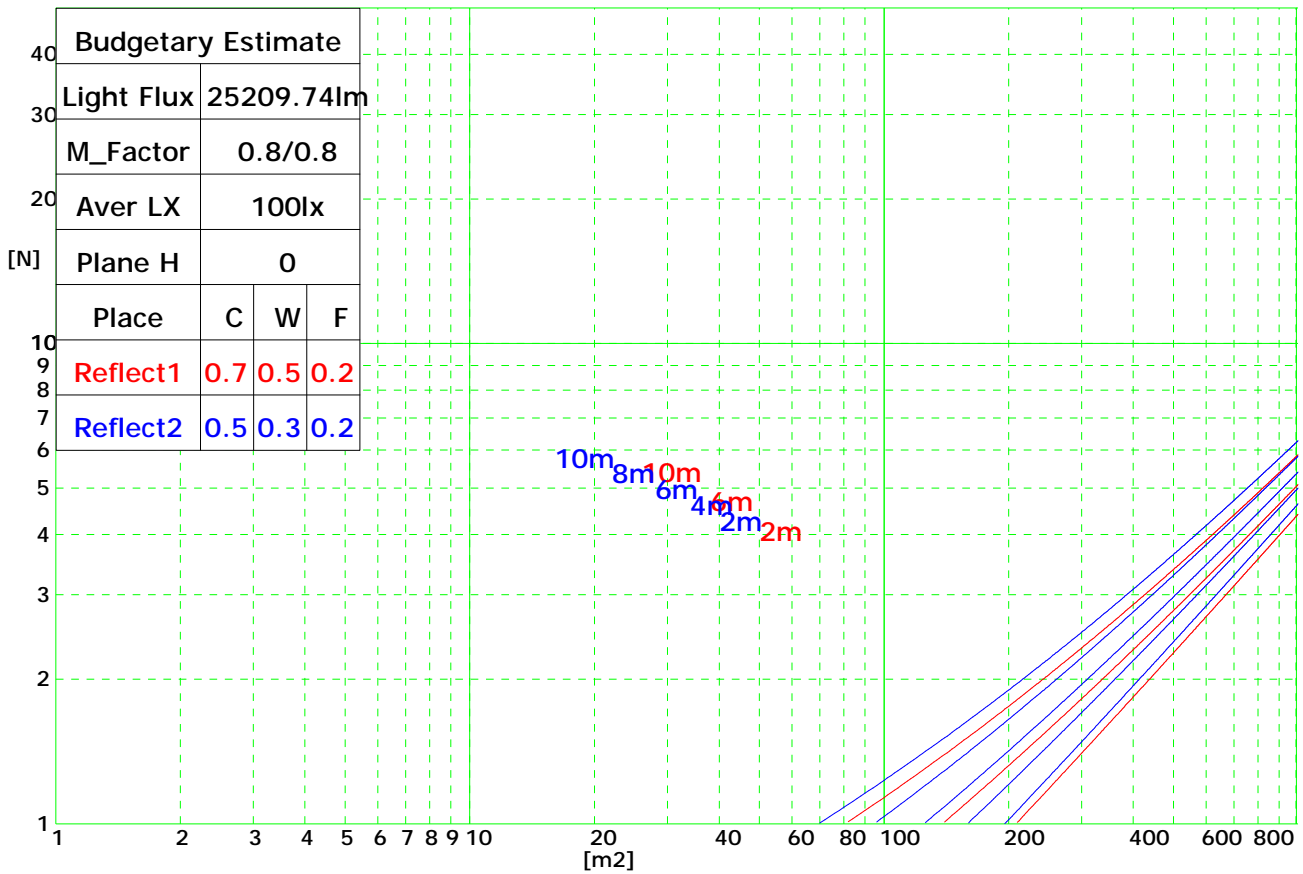


Beam Angle: 87.10°(50%Imax)

Coefficients of Utilization

RHOCC	80			70			50			30			10			0
RHOW	50	30	10	50	30	10	50	30	10	50	30	10	50	30	10	0
RCR	COEFFICIENTS OF UTILIZATION FOR RHOFC=20															
0	1.19	1.19	1.19	1.16	1.16	1.16	1.11	1.11	1.11	1.06	1.06	1.06	1.02	1.02	1.02	1.00
1	1.10	1.09	1.08	1.09	1.07	1.06	1.05	1.03	1.02	0.99	0.98	0.96	0.93	0.91	0.89	0.84
2	0.99	0.97	0.96	0.98	0.95	0.94	0.95	0.92	0.90	0.90	0.88	0.85	0.85	0.82	0.79	0.75
3	0.88	0.86	0.85	0.88	0.85	0.83	0.85	0.82	0.79	0.82	0.79	0.75	0.78	0.74	0.71	0.66
4	0.79	0.77	0.76	0.79	0.76	0.74	0.77	0.74	0.71	0.75	0.71	0.67	0.72	0.67	0.63	0.59
5	0.72	0.69	0.68	0.71	0.68	0.66	0.70	0.66	0.63	0.69	0.64	0.60	0.66	0.61	0.57	0.53
6	0.65	0.62	0.61	0.65	0.62	0.60	0.64	0.60	0.57	0.63	0.58	0.54	0.61	0.56	0.51	0.48
7	0.59	0.57	0.55	0.59	0.56	0.54	0.59	0.55	0.52	0.58	0.53	0.49	0.57	0.51	0.47	0.43
8	0.54	0.52	0.50	0.54	0.51	0.49	0.54	0.50	0.47	0.54	0.49	0.45	0.53	0.47	0.43	0.39
9	0.49	0.47	0.46	0.50	0.47	0.45	0.50	0.46	0.43	0.50	0.45	0.41	0.49	0.43	0.39	0.36
10	0.45	0.43	0.42	0.46	0.43	0.41	0.46	0.42	0.40	0.46	0.41	0.38	0.46	0.40	0.36	0.33

Indoor Budgetary Estimate Chart



UGR综合眩光指数表

Ceiling	70	70	50	50	30	70	70	50	50	30	
Wall	50	30	50	30	30	50	30	50	30	30	
Floor	20	20	20	20	20	20	20	20	20	20	
Room Size	Left to light axis direction of observation					Direction of light axis parallel observation					
X	Y										
2H	2H	14.0	15.0	14.2	15.0	15.5	13.7	15.0	14.1	15.2	15.5
	3H	15.3	16.5	15.7	16.7	17.1	15.3	16.4	15.6	16.8	17.0
	4H	16.0	17.1	16.4	17.5	17.7	16.0	17.0	16.3	17.5	17.8
	6H	16.6	17.5	17.1	17.9	18.0	16.5	17.4	16.9	17.9	18.0
	8H	16.9	17.8	17.1	18.0	18.3	16.9	17.8	16.9	17.9	18.3
4H	12H	16.8	17.8	17.2	18.1	18.5	16.9	17.6	17.1	18.3	18.3
	2H	14.8	15.7	15.0	15.9	16.1	14.7	15.7	14.8	15.9	16.0
	3H	16.4	17.4	16.7	17.3	17.7	16.4	17.3	16.6	17.4	17.8
	4H	17.2	17.9	17.5	18.0	18.3	17.0	17.8	17.4	18.1	18.5
	6H	17.8	18.4	18.0	18.8	18.9	17.7	18.4	17.9	18.6	19.1
8H	8H	18.1	18.6	18.3	18.8	19.3	17.9	18.5	18.3	18.8	19.1
	12H	18.2	18.9	18.5	19.1	19.3	18.2	18.6	18.4	19.0	19.4
	4H	17.5	18.2	17.9	18.3	18.8	17.4	18.1	17.7	18.4	18.8
	6H	18.3	18.8	18.8	19.1	19.4	18.2	18.7	18.6	19.0	19.5
	8H	18.6	19.1	19.0	19.4	19.8	18.6	19.0	18.9	19.3	19.8
12H	12H	19.0	19.3	19.4	19.6	20.0	18.8	19.2	19.2	19.7	20.0
	4H	17.6	18.2	17.9	18.4	18.7	17.5	18.1	17.8	18.4	18.8
	6H	18.4	18.9	18.8	19.1	19.6	18.4	18.7	18.6	19.1	19.6
	8H	18.8	19.3	19.3	19.4	19.8	18.8	19.0	19.1	19.5	19.8