

Luminaire Property

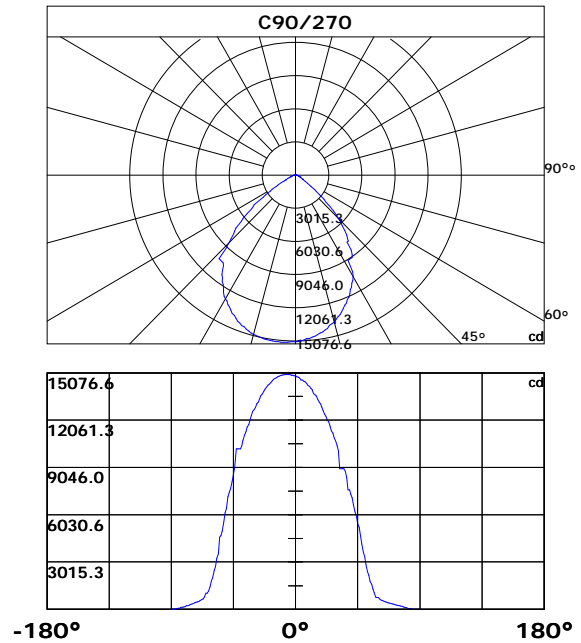
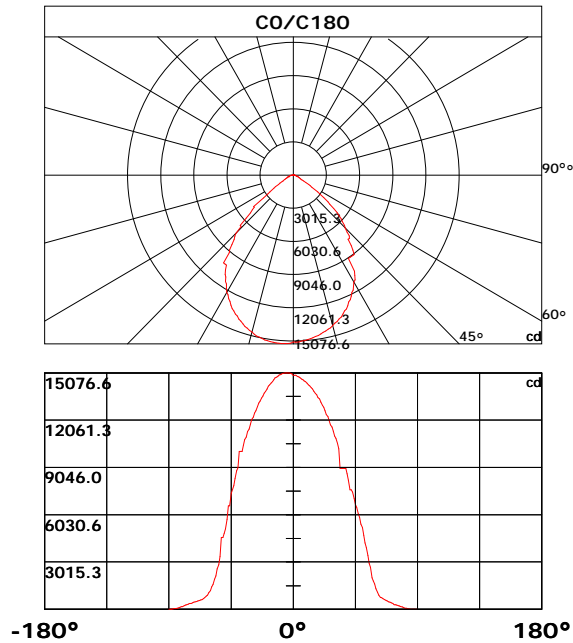
Luminaire Description: UFO-200W
 Luminaire Categorie:
 Lamp Categorie:
 Lamp Description:
 Number of Lamp:
 Lamp Lumens(lm): 26562.45
 Luminous Length(m):
 Luminous Width(m):
 Luminous Height(m):

Voltage: 231.8 V
 Current: 0.887 A
 Power: 204.38 W
 Power Factor: 0.994
 Test Lab:
 Photometric Type: Type C

Photometric Results

CIE Class: Direct
 Measurement Flux: 26562.45 lm
 Efficiency: 129.966 lm/W
 Central Intensity: 14909.61cd
 Max. Intensity: 15076.585cd
 Field Angle(10%Imax): 116.24, 114.86

Max.Intensity Angle: C:180.0 G:4.0
 Beam Angle(50%Imax): 85.22, 82.72
 Luminaire Efficacy Rating(LER) : 100.00%
 Upward Ratio: 0.0%
 Downward Ratio: 100.0%



Light intensity data Unit[cd]

C\G	G0.0	G1.0	G2.0	G3.0	G4.0	G5.0	G6.0	G7.0	G8.0	G9.0
C0.0	14909.6	14937.1	14912.1	14851.3	14819.1	14754.7	14686.8	14643.9	14561.6	14511.6
C30.0	14909.6	14715.4	14693.9	14622.4	14561.6	14518.7	14436.5	14339.9	14304.2	14204.0
C60.0	14909.6	14851.3	14808.4	14758.3	14697.5	14697.5	14601.0	14518.7	14468.7	14365.0
C90.0	14909.6	14819.1	14797.7	14736.9	14626.0	14626.0	14543.8	14493.7	14393.6	14272.0
C120.0	14909.6	14922.8	14904.9	14890.6	14851.3	14801.2	14772.6	14701.1	14654.6	14568.8
C150.0	14909.6	14983.6	14965.7	14944.3	14904.9	14858.4	14822.7	14758.3	14715.4	14626.0
C180.0	14909.6	15008.6	15051.6	15069.4	15076.6	15076.6	15058.7	15048.0	15019.4	14972.9
C210.0	14909.6	14819.1	14840.6	14872.8	14890.6	14901.4	14901.4	14894.2	14887.1	14858.4
C240.0	14909.6	14930.0	14947.8	14969.3	14983.6	14983.6	14990.8	14980.0	14955.0	14940.7
C270.0	14909.6	14879.9	14919.2	14937.1	14955.0	14980.0	14969.3	14969.3	14965.7	14947.8
C300.0	14909.6	14937.1	14926.4	14933.5	14915.7	14894.2	14876.3	14840.6	14790.5	14758.3
C330.0	14909.6	14965.7	14951.4	14919.2	14901.4	14858.4	14815.5	14790.5	14733.3	14665.3
C360.0	14909.6	14937.1	14912.1	14851.3	14819.1	14754.7	14686.8	14643.9	14561.6	14511.6
C\G	G10.0	G11.0	G12.0	G13.0	G14.0	G15.0	G16.0	G17.0	G18.0	G19.0
C0.0	14415.0	14304.2	14246.9	14125.4	14053.8	13914.4	13757.0	13678.4	13499.6	13413.7
C30.0	14136.1	14028.8	13892.9	13825.0	13681.9	13606.8	13445.9	13270.7	13188.4	12991.8
C60.0	14268.4	14200.5	14086.0	13946.6	13878.6	13807.1	13553.2	13474.5	13295.7	13192.0
C90.0	14218.3	14082.4	14000.2	13771.3	13681.9	13589.0	13410.2	13217.0	13113.3	12909.5
C120.0	14515.1	14407.9	14279.1	14214.8	14061.0	13989.5	13828.5	13639.0	13542.5	13352.9
C150.0	14579.5	14465.1	14329.2	14257.7	14111.1	14025.2	13853.6	13671.2	13578.2	13370.8
C180.0	14944.3	14876.3	14794.1	14754.7	14636.7	14508.0	14443.6	14304.2	14225.5	14061.0
C210.0	14844.1	14801.2	14765.5	14708.3	14622.4	14583.1	14454.4	14407.9	14279.1	14211.2
C240.0	14912.1	14883.5	14822.7	14751.2	14719.0	14618.9	14565.2	14450.8	14336.3	14250.5
C270.0	14919.2	14908.5	14862.0	14812.0	14772.6	14708.3	14658.2	14568.8	14468.7	14347.1
C300.0	14704.7	14629.6	14597.4	14515.1	14422.2	14365.0	14254.1	14196.9	14068.1	13917.9
C330.0	14633.2	14554.5	14508.0	14418.6	14325.6	14257.7	14139.7	14082.4	13946.6	13807.1
C360.0	14415.0	14304.2	14246.9	14125.4	14053.8	13914.4	13757.0	13678.4	13499.6	13413.7
C\G	G20.0	G21.0	G22.0	G23.0	G24.0	G25.0	G26.0	G27.0	G28.0	G29.0
C0.0	13217.0	13002.5	12895.2	12662.8	12416.0	12290.8	12026.2	11761.6	11625.7	11343.2
C30.0	12888.0	12566.2	12451.8	12308.7	12054.8	11929.7	11654.3	11511.3	11225.2	10914.1
C60.0	12998.9	12998.9	12687.8	12458.9	12344.5	12087.0	11954.7	11682.9	11539.9	11246.6
C90.0	12680.6	12441.0	12326.6	12065.6	11940.4	11672.2	11379.0	11232.3	10924.8	10767.5
C120.0	13234.9	13031.1	12798.6	12673.5	12437.5	12190.7	12047.7	11779.5	11500.5	11346.8
C150.0	13274.3	13056.1	12823.7	12705.7	12458.9	12326.6	12054.8	11775.9	11632.9	11328.9
C180.0	13885.8	13789.2	13592.5	13481.7	13267.1	13149.1	12916.7	12659.2	12523.3	12244.4
C210.0	14061.0	13907.2	13814.2	13631.9	13546.0	13345.8	13134.8	13020.4	12791.5	12551.9
C240.0	14093.2	14014.5	13825.0	13631.9	13524.6	13310.0	13070.4	12963.1	12712.8	12448.2
C270.0	14289.9	14143.2	14061.0	13896.5	13721.3	13635.4	13424.5	13217.0	13109.8	12866.6
C300.0	13839.3	13681.9	13506.7	13413.7	13320.7	13116.9	12898.8	12791.5	12559.1	12433.9
C330.0	13732.0	13556.8	13478.1	13288.6	13192.0	12991.8	12777.2	12655.6	12416.0	12294.4
C360.0	13217.0	13002.5	12895.2	12662.8	12416.0	12290.8	12026.2	11761.6	11625.7	11343.2

Light intensity data Unit[cd]

C\G	G30.0	G31.0	G32.0	G33.0	G34.0	G35.0	G36.0	G37.0	G38.0	G39.0
C0.0	11046.4	10903.3	10581.5	10238.2	8986.6	8986.6	8986.6	8986.6	8986.6	8632.6
C30.0	10438.5	10438.5	10109.5	9025.9	9025.9	9025.9	8840.0	8654.0	8267.8	8078.3
C60.0	10942.7	10778.2	10442.0	10266.8	10095.2	10095.2	10095.2	8925.8	8532.4	8328.6
C90.0	10445.6	10102.3	8972.3	8972.3	8972.3	8972.3	8779.2	8375.1	7609.8	7609.8
C120.0	11042.8	10728.1	10570.8	10231.1	10231.1	10231.1	10231.1	9140.4	8718.4	8511.0
C150.0	11014.2	10849.7	10517.1	10159.5	8983.0	8983.0	8983.0	8983.0	8553.9	8106.9
C180.0	12101.3	11804.5	11489.8	11336.0	10985.6	10813.9	10463.5	10077.3	10077.3	10077.3
C210.0	12412.4	12144.2	11861.7	11708.0	11368.2	11042.8	10864.0	10499.3	10116.6	10116.6
C240.0	12301.6	12019.1	11718.7	11557.8	11218.0	11046.4	10688.8	10327.6	8865.0	8865.0
C270.0	12741.4	12616.3	12355.2	12054.8	11775.9	11625.7	11307.4	11135.8	10778.2	10413.4
C300.0	12180.0	11908.2	11772.3	11489.8	11336.0	11024.9	10695.9	10527.9	10148.8	9004.5
C330.0	12044.1	11779.5	11643.6	11361.1	11064.3	10906.9	10585.1	10259.7	10080.9	10080.9
C360.0	11046.4	10903.3	10581.5	10238.2	8986.6	8986.6	8986.6	8986.6	8986.6	8632.6
C\G	G40.0	G41.0	G42.0	G43.0	G44.0	G45.0	G46.0	G47.0	G48.0	G49.0
C0.0	8224.9	7609.8	7609.8	7463.2	7073.4	6687.2	6486.9	6082.8	5868.3	5432.0
C30.0	7606.2	7291.5	7094.9	6712.2	6504.8	6097.1	5678.8	5460.6	5010.0	4774.0
C60.0	7928.1	7520.4	7323.7	6923.2	6522.7	6308.1	5875.4	5428.4	5206.7	4960.0
C90.0	7323.7	7105.6	6665.7	6208.0	5975.6	5482.1	5224.6	4706.1	4173.2	3640.4
C120.0	8089.0	7645.6	7645.6	6944.7	6705.1	6458.3	5685.9	5417.7	4884.9	4609.5
C150.0	7595.5	7416.7	7170.0	6655.0	6394.0	5836.1	5267.5	4977.8	4387.8	4098.1
C180.0	9033.1	8840.0	8360.8	7888.7	7642.0	7388.1	6594.2	6594.2	5746.7	5138.8
C210.0	10116.6	10116.6	8854.3	8396.5	8146.2	7652.7	7398.8	6862.4	6587.1	6007.7
C240.0	8865.0	8865.0	8865.0	8418.0	7588.4	7459.6	7205.7	6933.9	6376.1	5800.3
C270.0	10227.5	10227.5	10227.5	10227.5	9043.8	8607.5	8156.9	7684.9	7448.9	7187.8
C300.0	9004.5	9004.5	8800.6	8378.7	8164.1	7613.4	7495.4	7019.8	6522.7	6272.4
C330.0	10080.9	10080.9	8768.5	8382.2	8185.6	7785.0	7581.2	7177.1	6755.1	6537.0
C360.0	8224.9	7609.8	7609.8	7463.2	7073.4	6687.2	6486.9	6082.8	5868.3	5432.0
C\G	G50.0	G51.0	G52.0	G53.0	G54.0	G55.0	G56.0	G57.0	G58.0	G59.0
C0.0	5206.7	4731.1	4230.5	3940.8	3425.5	2914.8	2669.5	2006.9	1810.5	1628.2
C30.0	4298.4	3804.9	3562.5	3061.1	2813.3	2343.4	2120.2	1715.1	1375.7	1230.9
C60.0	4588.1	3969.4	3458.0	3203.4	2680.2	2447.8	2015.1	1818.4	1466.9	1182.6
C90.0	3379.0	2868.0	2397.4	2175.7	1774.4	1598.8	1293.8	1039.2	756.0	756.0
C120.0	4570.2	3797.8	3264.2	2761.4	2522.2	2089.5	1715.4	1552.4	1256.6	1045.3
C150.0	3525.3	2982.4	2729.9	2263.6	2026.5	1663.9	1508.0	1248.8	1050.6	903.7
C180.0	4842.0	4577.3	4577.3	3377.6	2841.2	2589.1	2133.1	1930.3	1577.4	1429.3
C210.0	5432.0	5135.2	4580.9	4580.9	3658.3	3106.1	2844.7	2344.5	2120.2	1707.6
C240.0	5507.1	4902.8	4609.5	4012.3	3443.0	3164.4	2644.1	2172.8	1957.9	1545.6
C270.0	6408.3	6136.5	5571.5	4995.7	4706.1	4595.2	3539.6	3261.0	2730.3	2478.2
C300.0	5757.4	5489.2	4952.8	4677.5	4137.5	3593.9	3288.2	2763.2	2513.2	2046.6
C330.0	6100.7	6100.7	5407.0	5160.2	4659.6	4595.2	3883.6	3349.0	3088.3	2554.0
C360.0	5206.7	4731.1	4230.5	3940.8	3425.5	2914.8	2669.5	2006.9	1810.5	1628.2

Light intensity data Unit[cd]

C\G	G60.0	G61.0	G62.0	G63.0	G64.0	G65.0	G66.0	G67.0	G68.0	G69.0
C0.0	1313.5	1077.8	908.3	755.3	730.6	685.5	613.3	582.2	526.4	476.7
C30.0	754.9	754.9	738.1	625.4	581.8	483.1	457.7	435.2	395.2	358.7
C60.0	1063.9	863.6	783.9	669.1	587.9	556.1	503.5	481.7	458.8	410.2
C90.0	742.0	646.5	580.7	553.2	507.1	486.3	448.4	414.5	398.7	368.3
C120.0	1045.3	821.4	721.3	682.0	616.9	590.0	543.6	504.2	485.6	468.1
C150.0	758.1	747.7	707.7	641.9	588.3	565.7	524.6	487.8	470.6	435.9
C180.0	1180.5	1066.4	904.0	843.9	749.9	680.9	623.3	599.0	556.4	537.1
C210.0	1374.3	1232.3	1009.2	838.6	774.2	670.5	595.1	563.9	514.2	471.7
C240.0	1223.4	1093.9	756.7	749.5	696.3	612.9	550.0	523.9	479.2	458.4
C270.0	2016.2	1803.4	1440.8	1142.2	1020.6	1020.6	759.9	651.9	613.3	550.4
C300.0	1640.3	1468.7	1187.2	1070.3	887.9	755.3	713.4	635.1	602.9	546.4
C330.0	2094.1	1884.6	1525.2	1367.1	1111.1	1012.0	859.3	752.8	713.4	645.8
C360.0	1313.5	1077.8	908.3	755.3	730.6	685.5	613.3	582.2	526.4	476.7
C\G	G70.0	G71.0	G72.0	G73.0	G74.0	G75.0	G76.0	G77.0	G78.0	G79.0
C0.0	454.2	406.2	384.4	299.7	299.7	277.7	234.7	212.9	168.7	147.8
C30.0	341.2	307.4	274.2	258.2	227.0	196.4	181.3	151.6	137.2	107.9
C60.0	394.1	363.3	333.8	317.1	286.6	271.2	240.1	205.9	169.8	153.4
C90.0	353.3	324.6	295.0	280.1	250.0	234.6	200.6	184.5	151.9	121.3
C120.0	420.9	405.9	375.5	360.5	328.6	296.8	278.5	261.7	226.9	189.8
C150.0	401.6	385.1	351.2	332.2	298.8	264.7	246.7	209.2	190.0	152.9
C180.0	499.9	465.2	456.7	416.6	382.3	365.1	327.5	289.2	268.3	223.0
C210.0	457.4	417.0	384.1	368.3	336.2	319.0	285.3	268.4	234.2	217.2
C240.0	420.9	403.0	368.3	335.1	318.1	283.9	266.5	226.1	186.7	149.9
C270.0	499.2	475.3	458.1	411.6	367.3	327.2	307.8	271.0	235.0	217.2
C300.0	494.6	469.5	419.8	370.8	321.6	299.0	256.0	235.1	193.2	153.4
C330.0	587.5	531.0	504.2	459.2	399.1	372.3	323.2	295.8	248.7	203.8
C360.0	454.2	406.2	384.4	299.7	299.7	277.7	234.7	212.9	168.7	147.8
C\G	G80.0	G81.0	G82.0	G83.0	G84.0	G85.0	G86.0	G87.0	G88.0	G89.0
C0.0	110.6	76.0	66.2	42.0	30.0	9.0	2.4	2.5	2.7	2.9
C30.0	75.8	69.9	46.0	34.6	13.6	4.7	1.1	1.1	1.2	1.3
C60.0	124.1	110.4	83.9	60.0	48.1	25.3	5.0	1.4	1.4	1.4
C90.0	107.1	75.5	52.3	39.4	15.4	1.2	1.2	1.3	1.4	1.4
C120.0	154.4	137.6	104.4	89.1	60.4	46.4	19.8	2.1	1.5	1.5
C150.0	118.2	75.7	70.2	56.1	29.3	17.3	1.4	1.3	1.3	1.4
C180.0	179.7	158.7	121.8	90.1	75.2	47.7	46.1	12.8	1.4	1.3
C210.0	182.2	147.9	131.4	101.0	73.0	59.4	46.3	14.3	2.5	2.4
C240.0	133.0	117.2	75.8	60.9	48.0	24.3	14.4	2.3	2.2	2.4
C270.0	181.5	147.4	131.2	115.3	71.8	58.4	46.0	13.3	2.5	2.5
C300.0	134.8	75.7	75.7	57.0	30.9	19.1	2.5	2.4	2.5	2.7
C330.0	182.1	141.6	122.7	89.3	59.7	47.0	23.4	4.1	2.7	2.8
C360.0	110.6	76.0	66.2	42.0	30.0	9.0	2.4	2.5	2.7	2.9

Light intensity data Unit[cd]

C\G	G90.0									
C0.0	3.1									
C30.0	1.3									
C60.0	1.5									
C90.0	1.5									
C120.0	1.5									
C150.0	1.5									
C180.0	1.3									
C210.0	2.5									
C240.0	2.5									
C270.0	2.8									
C300.0	2.8									
C330.0	3.1									
C360.0	3.1									

Zonal Luminous Flux Data

Gamma [°]	I _{mean} [cd]	Zonal Flux [lm]	Sum Flux [lm]	Zonal Flux [%]	Sum Flux [%]
0.0	14909.61	0.00	0.00	0.00	0.00
0.0-1.0	14897.49	14.26	14.26	0.05	0.05
1.0-2.0	14893.31	42.76	57.02	0.16	0.21
2.0-3.0	14875.43	71.20	128.22	0.27	0.48
3.0-4.0	14848.61	99.50	227.71	0.37	0.86
4.0-5.0	14829.24	127.67	355.39	0.48	1.34
5.0-6.0	14789.61	155.65	511.04	0.59	1.92
6.0-7.0	14748.18	183.34	694.38	0.69	2.61
7.0-8.0	14704.08	210.78	905.17	0.79	3.41
8.0-9.0	14640.90	237.83	1142.99	0.90	4.30
9.0-10.0	14590.84	264.54	1407.53	1.00	5.30
10.0-11.0	14511.87	290.80	1698.32	1.09	6.39
11.0-12.0	14432.00	316.40	2014.72	1.19	7.58
12.0-13.0	14341.71	341.47	2356.19	1.29	8.87
13.0-14.0	14247.24	365.94	2722.13	1.38	10.25
14.0-15.0	14164.40	390.05	3112.18	1.47	11.72
15.0-16.0	14030.29	413.13	3525.31	1.56	13.27
16.0-17.0	13913.48	435.16	3960.47	1.64	14.91
17.0-18.0	13795.17	456.86	4417.32	1.72	16.63
18.0-19.0	13652.13	477.53	4894.85	1.80	18.43
19.0-20.0	13516.24	497.26	5392.11	1.87	20.30
20.0-21.0	13349.06	515.87	5907.97	1.94	22.24
21.0-22.0	13188.44	533.28	6441.26	2.01	24.25
22.0-23.0	13018.28	549.89	6991.14	2.07	26.32
23.0-24.0	12851.99	565.62	7556.76	2.13	28.45
24.0-25.0	12670.51	580.33	8137.09	2.18	30.63
25.0-26.0	12444.92	592.85	8729.94	2.23	32.87
26.0-27.0	12254.20	604.27	9334.21	2.27	35.14
27.0-28.0	12046.78	615.25	9949.46	2.32	37.46
28.0-29.0	11815.53	624.31	10573.77	2.35	39.81
29.0-30.0	11559.25	631.11	11204.88	2.38	42.18
30.0-31.0	11339.33	637.23	11842.12	2.40	44.58
31.0-32.0	11002.88	640.08	12482.20	2.41	46.99
32.0-33.0	10700.11	639.38	13121.57	2.41	49.40
33.0-34.0	10336.84	636.64	13758.21	2.40	51.80
34.0-35.0	10229.56	638.72	14396.93	2.40	54.20
35.0-36.0	10043.31	645.49	15042.42	2.43	56.63
36.0-37.0	9657.69	642.54	15684.95	2.42	59.05
37.0-38.0	9227.97	630.38	16315.33	2.37	61.42
38.0-39.0	8985.40	621.67	16937.01	2.34	63.76
39.0-40.0	8674.58	615.92	17552.92	2.32	66.08

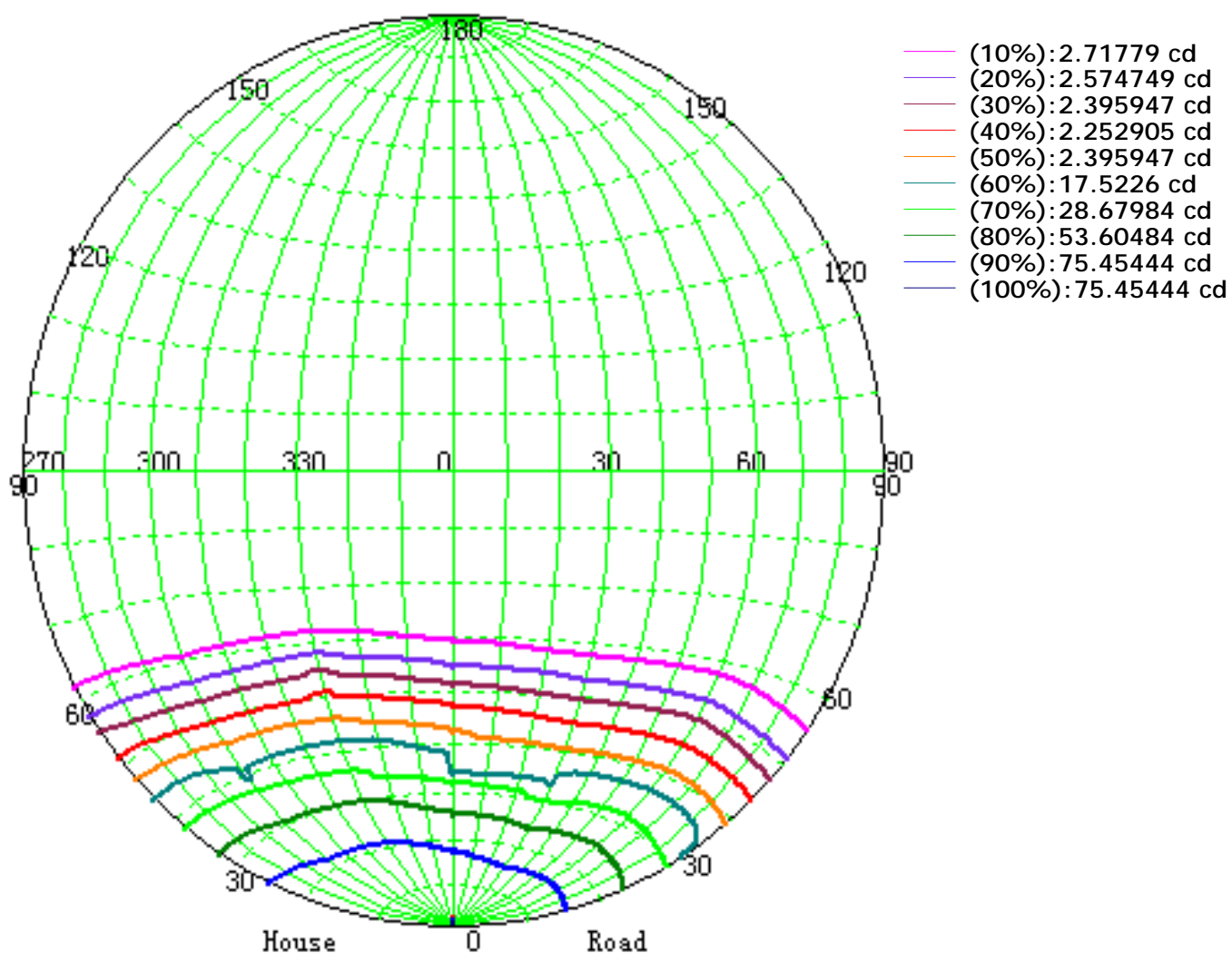
Zonal Luminous Flux Data

Gamma [°]	I _{mean} [cd]	Zonal Flux [lm]	Sum Flux [lm]	Zonal Flux [%]	Sum Flux [%]
40.0-41.0	8477.00	610.76	18163.68	2.30	68.38
41.0-42.0	8115.53	602.84	18766.52	2.27	70.65
42.0-43.0	7716.50	586.46	19352.98	2.21	72.86
43.0-44.0	7328.80	567.85	19920.83	2.14	75.00
44.0-45.0	6947.95	548.67	20469.50	2.07	77.06
45.0-46.0	6554.29	528.04	20997.55	1.99	79.05
46.0-47.0	6195.49	507.09	21504.64	1.91	80.96
47.0-48.0	5747.29	482.79	21987.43	1.82	82.78
48.0-49.0	5371.51	456.60	22444.03	1.72	84.50
49.0-50.0	4967.92	431.09	22875.12	1.62	86.12
50.0-51.0	4541.27	402.32	23277.43	1.51	87.63
51.0-52.0	4111.79	371.31	23648.74	1.40	89.03
52.0-53.0	3684.19	339.12	23987.87	1.28	90.31
53.0-54.0	3223.98	304.48	24292.35	1.15	91.45
54.0-55.0	2891.85	273.00	24565.35	1.03	92.48
55.0-56.0	2471.28	242.35	24807.70	0.91	93.39
56.0-57.0	2100.12	209.02	25016.71	0.79	94.18
57.0-58.0	1808.64	180.75	25197.47	0.68	94.86
58.0-59.0	1542.32	156.66	25354.13	0.59	95.45
59.0-60.0	1267.20	132.73	25486.86	0.50	95.95
60.0-61.0	1121.77	114.01	25600.87	0.43	96.38
61.0-62.0	938.59	99.28	25700.15	0.37	96.75
62.0-63.0	828.21	85.93	25786.08	0.32	97.08
63.0-64.0	737.71	76.84	25862.92	0.29	97.37
64.0-65.0	676.59	69.99	25932.91	0.26	97.63
65.0-66.0	599.34	63.66	25996.57	0.24	97.87
66.0-67.0	552.68	57.93	26054.50	0.22	98.09
67.0-68.0	517.90	54.23	26108.73	0.20	98.29
68.0-69.0	477.31	50.77	26159.50	0.19	98.48
69.0-70.0	443.73	47.30	26206.80	0.18	98.66
70.0-71.0	412.81	44.27	26251.07	0.17	98.83
71.0-72.0	383.78	41.42	26292.49	0.16	98.98
72.0-73.0	350.79	38.41	26330.91	0.14	99.13
73.0-74.0	317.93	35.16	26366.06	0.13	99.26
74.0-75.0	292.33	32.24	26398.30	0.12	99.38
75.0-76.0	262.35	29.44	26427.75	0.11	99.49
76.0-77.0	234.28	26.48	26454.23	0.10	99.59
77.0-78.0	200.90	23.30	26477.53	0.09	99.68
78.0-79.0	169.81	19.92	26497.45	0.07	99.76
79.0-80.0	140.29	16.72	26514.17	0.06	99.82
80.0-81.0	111.15	13.60	26527.76	0.05	99.87

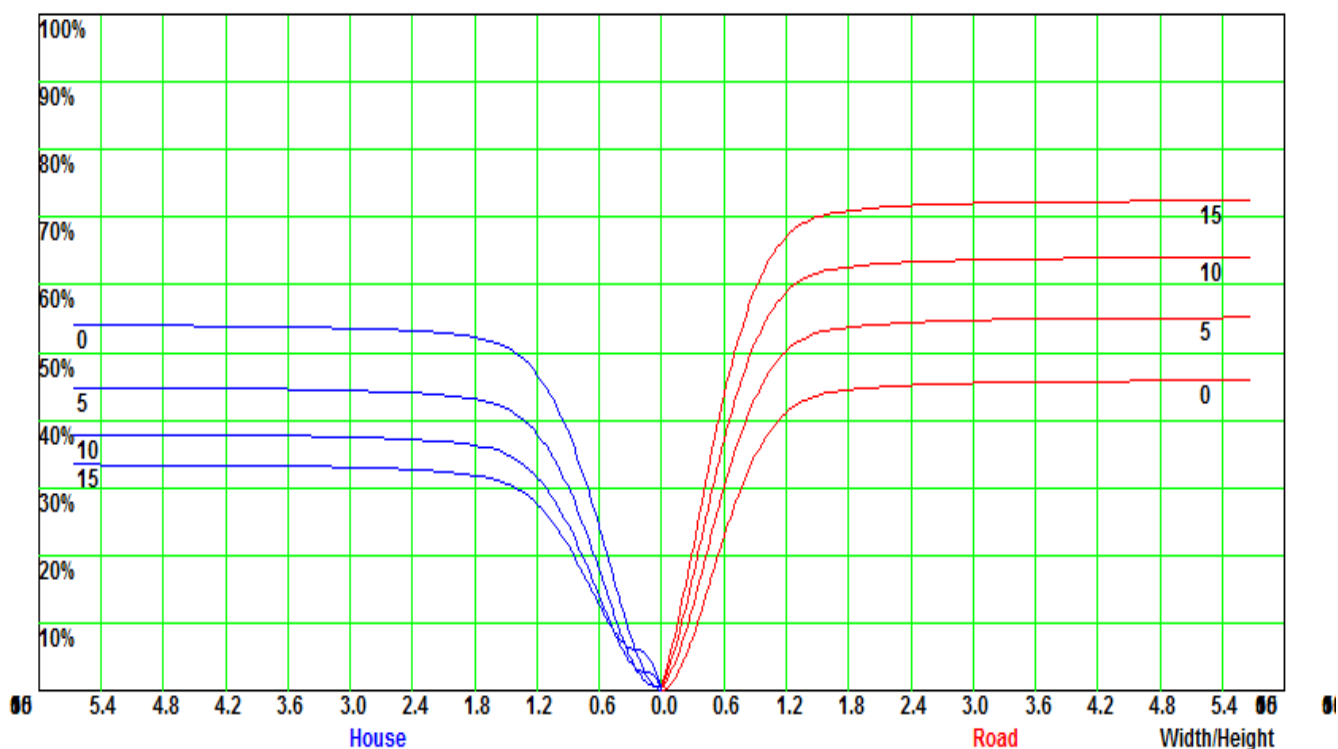
Zonal Luminous Flux Data

Gamma [°]	I _{mean} [cd]	Zonal Flux [lm]	Sum Flux [lm]	Zonal Flux [%]	Sum Flux [%]
81.0-82.0	90.14	10.92	26538.68	0.04	99.91
82.0-83.0	69.57	8.68	26547.36	0.03	99.94
83.0-84.0	46.27	6.31	26553.67	0.02	99.97
84.0-85.0	29.99	4.16	26557.83	0.02	99.98
85.0-86.0	17.47	2.59	26560.42	0.01	99.99
86.0-87.0	4.91	1.23	26561.65	0.00	100.00
87.0-88.0	1.93	0.38	26562.02	0.00	100.00
88.0-89.0	1.99	0.22	26562.24	0.00	100.00
89.0-90.0	2.12	0.23	26562.46	0.00	100.00

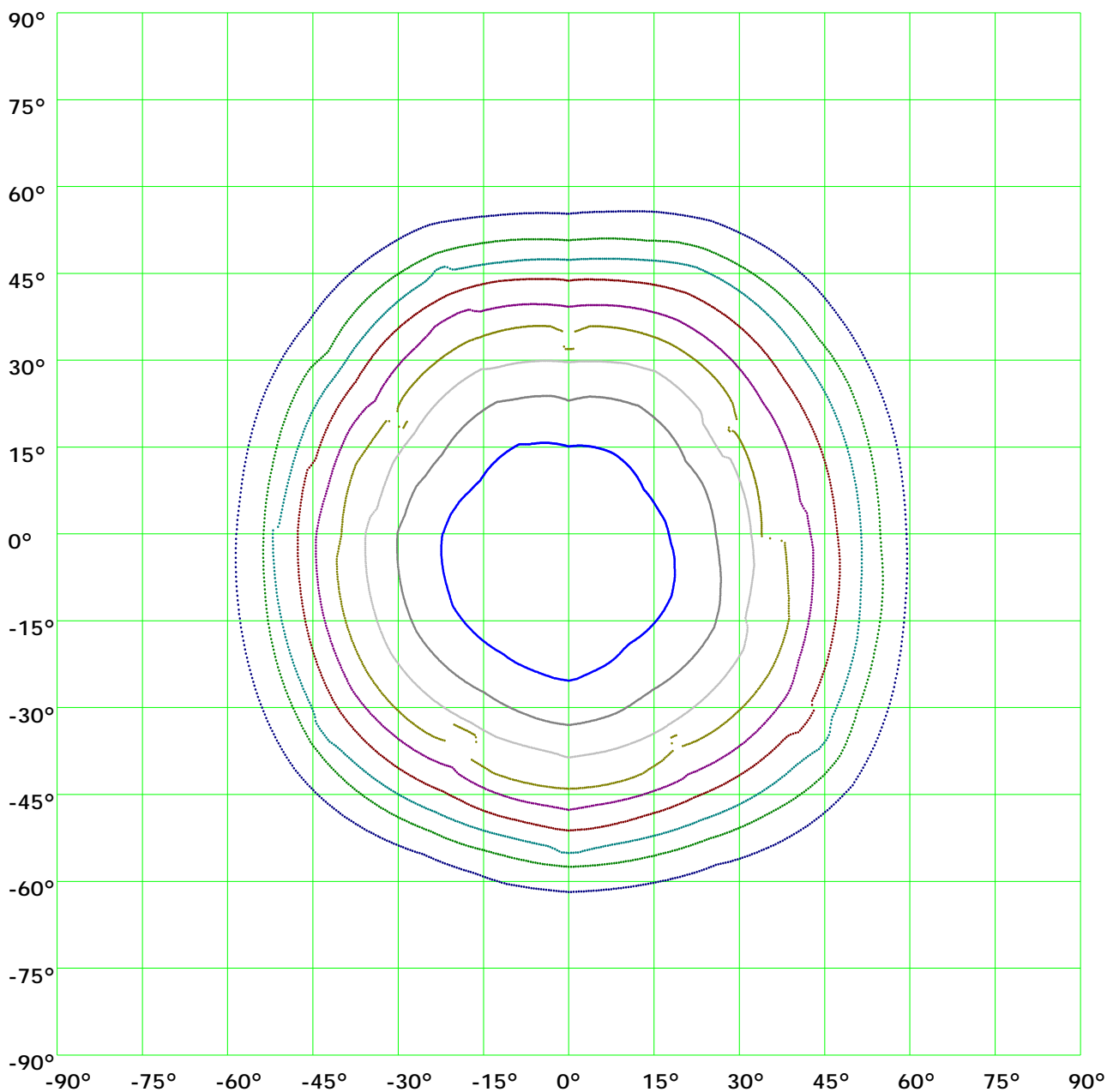
Iso-Candela [cd]



Coefficient Utilization Curve

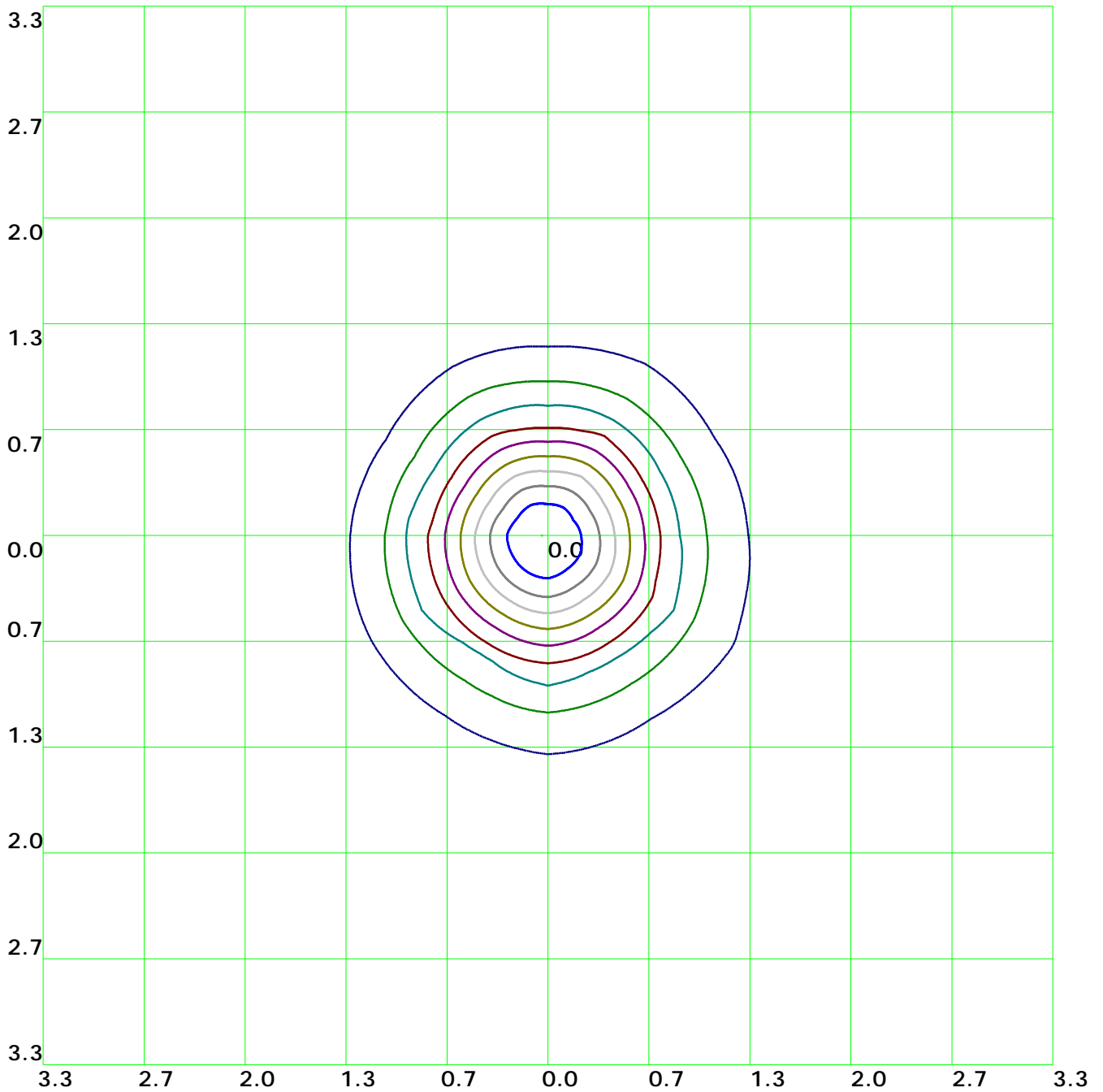


Isocandela(rectangle)



— (10%): 1507.7cd	— (20%): 3015.3cd	— (30%): 4523.cd	— (40%): 6030.6cd
— (50%): 7538.3cd	— (60%): 9046.cd	— (70%): 10553.6cd	— (80%): 12061.3cd
— (90%): 13568.9cd	— (100%): 15076.6cd		

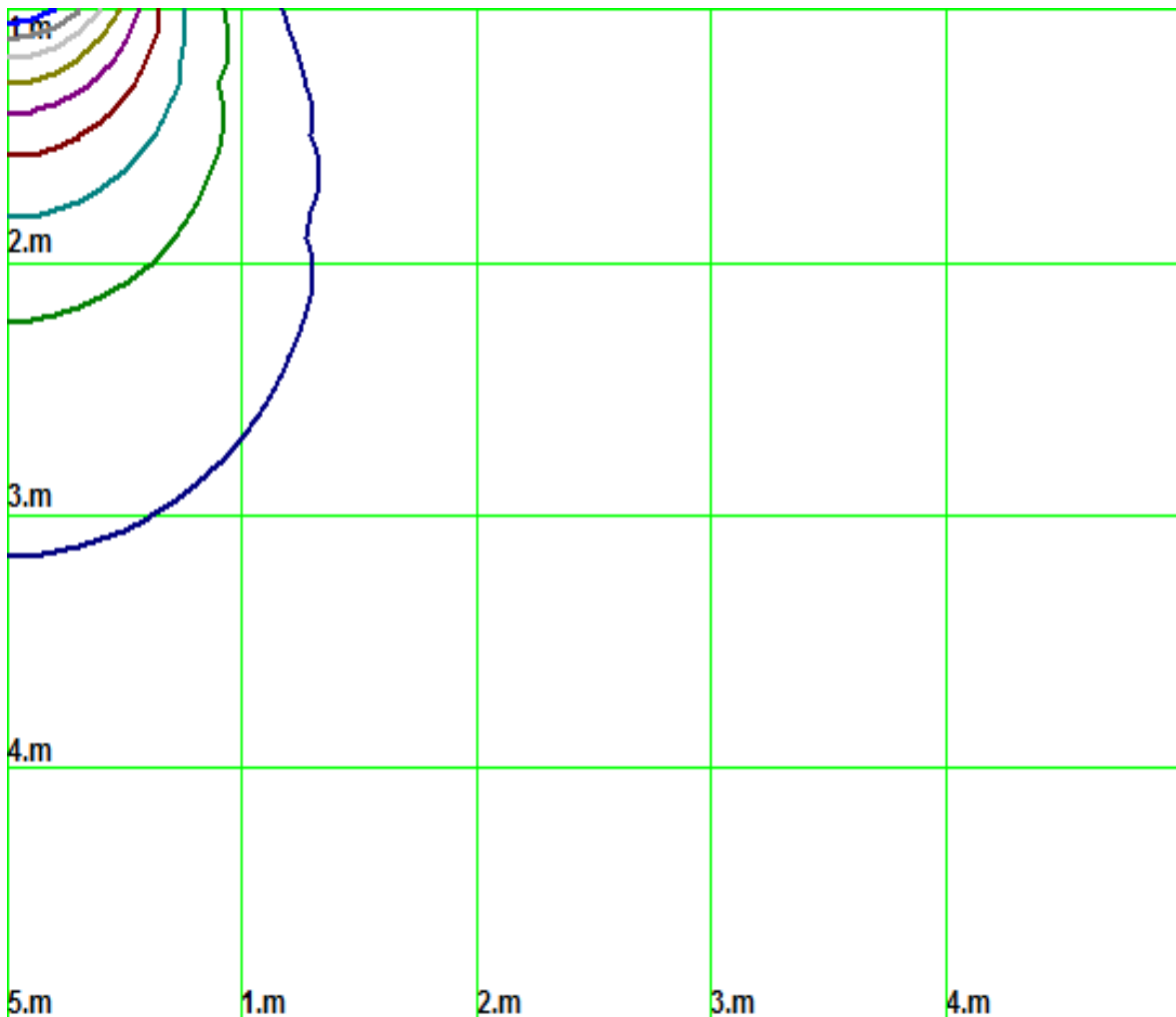
Isolx curve



Height: 1 m

- (10%): 1507.7lx — (20%): 3015.3lx — (30%): 4523.1lx — (40%): 6030.6lx
- (50%): 7538.3lx — (60%): 9046.1lx — (70%): 10553.6lx — (80%): 12061.3lx
- (90%): 13568.9lx — (100%): 15061.5lx

Space Isolx Curve



(10%): 1507.7lx (20%): 3015.3lx (30%): 4523.lx (40%): 6030.6lx
 (50%): 7538.3lx (60%): 9046.lx (70%): 10553.6lx (80%): 12061.3lx
 (90%): 13568.9lx (100%): 15061.5lx

Luminance Limiting Curve

Diameter: 0mm

Length: 0mm

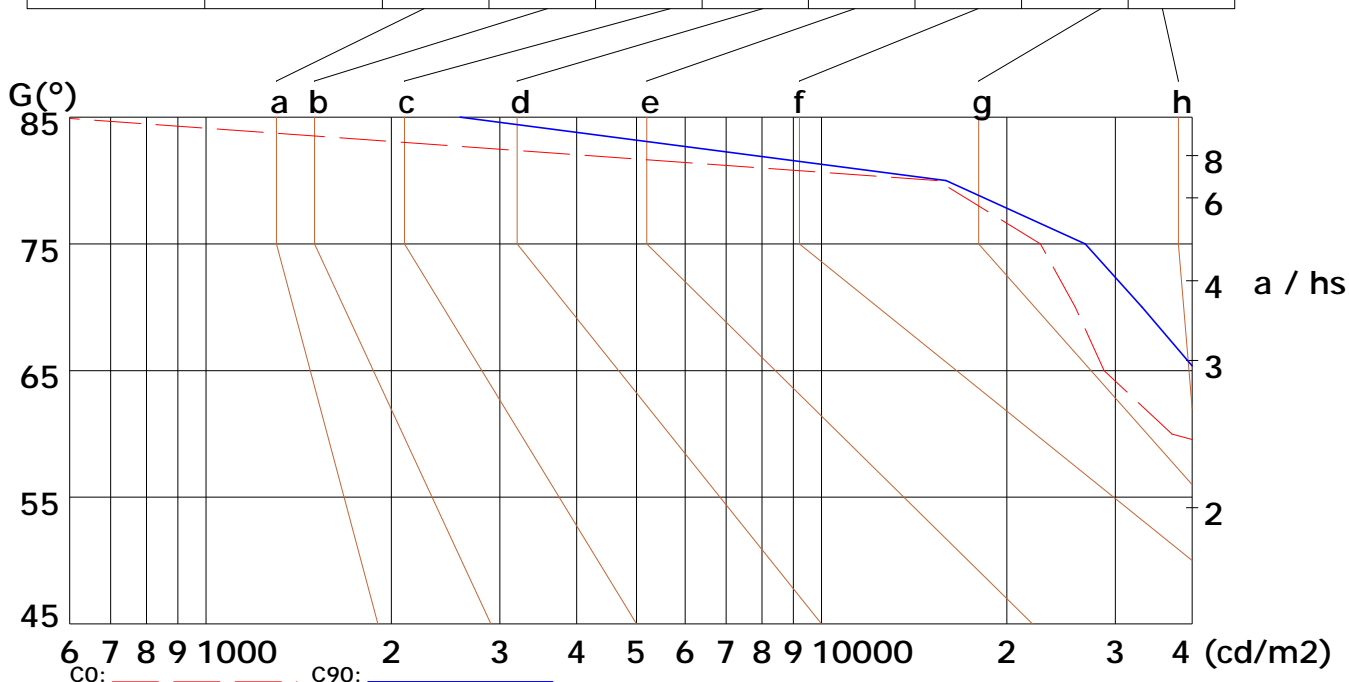
Width: 0mm

Height: 0mm

(cd/m²)

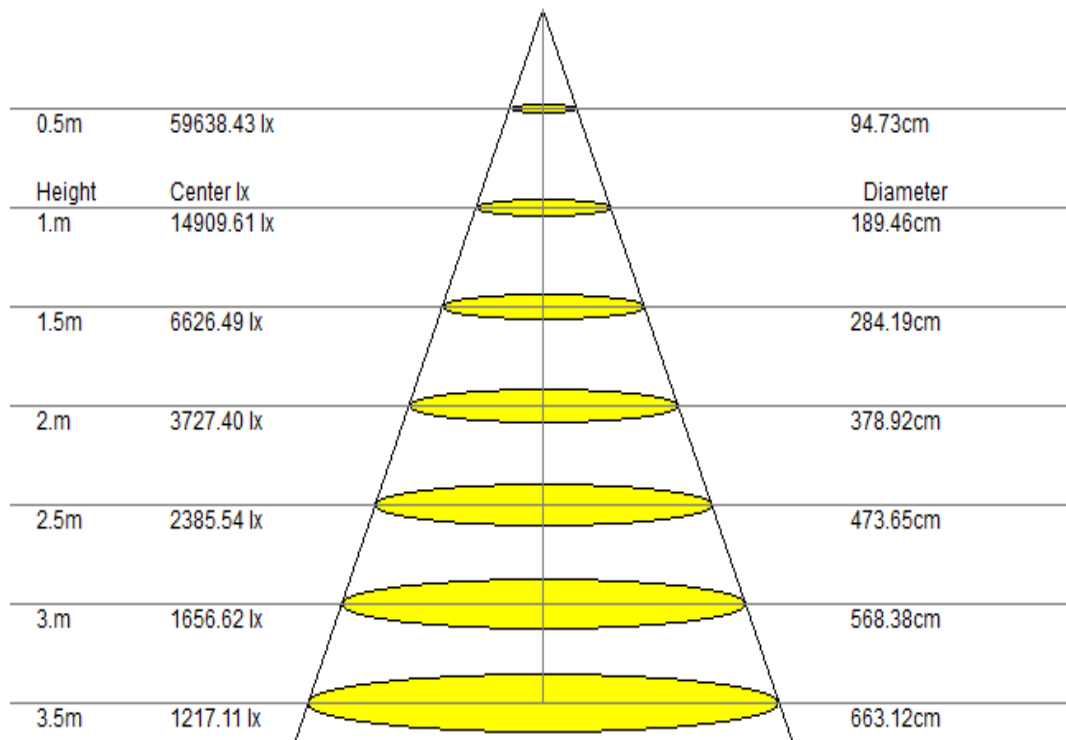
γ	45°	50°	55°	60°	65°	70°	75°	80°	85°
C0	193820	131426	96883	71012	528770	3925828	2922663	215414	16349
C90	236428	202505	127046	65674	40552	33197	26825	15924	2585

Glare	Quality	Service Values Illuminance (lx)									
1.15	A	2000	1000	500	≤300						
1.5	B		2000	1000	500	≤300					
1.85	C			2000	1000	500	≤300				
2.2	D				2000	1000	500	≤300			
2.55	E					2000	1000	500	≤300		



Lum. Limiting Curve (C0/C90)

Lux-Distance Curve

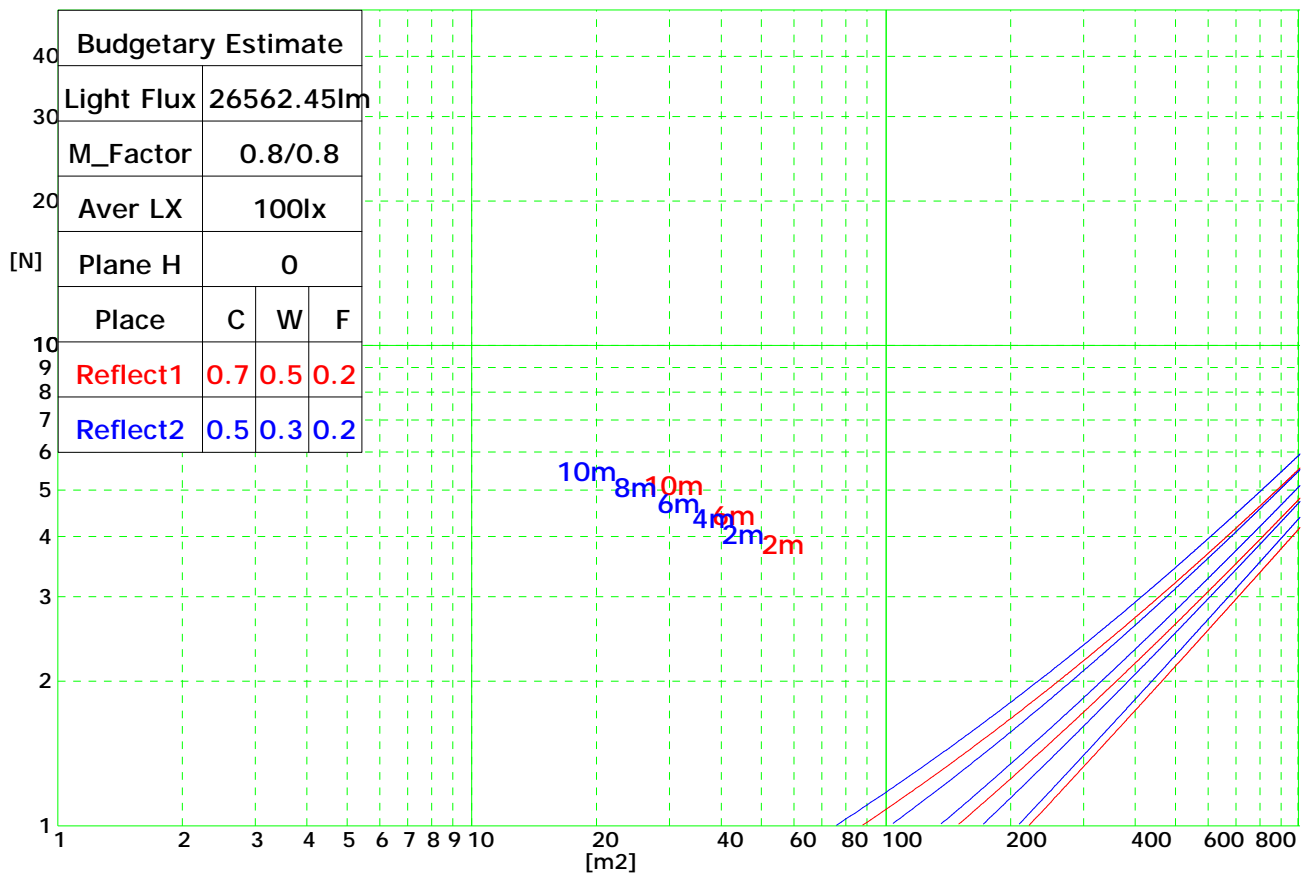


Beam Angle: 86.90°(50%Imax)

Coefficients of Utilization

RHOCC	80			70			50			30			10			0
RHOW	50	30	10	50	30	10	50	30	10	50	30	10	50	30	10	0
RCR	COEFFICIENTS OF UTILIZATION FOR RHOFC=20															
0	1.19	1.19	1.19	1.16	1.16	1.16	1.11	1.11	1.11	1.06	1.06	1.06	1.02	1.02	1.02	1.00
1	1.11	1.09	1.08	1.09	1.08	1.06	1.05	1.03	1.02	1.00	0.98	0.96	0.93	0.91	0.89	0.84
2	0.99	0.97	0.96	0.98	0.96	0.94	0.95	0.92	0.90	0.91	0.88	0.85	0.85	0.82	0.80	0.75
3	0.89	0.87	0.85	0.88	0.85	0.83	0.86	0.82	0.80	0.83	0.79	0.76	0.78	0.74	0.71	0.67
4	0.80	0.77	0.76	0.79	0.76	0.74	0.78	0.74	0.71	0.75	0.71	0.67	0.72	0.67	0.63	0.59
5	0.72	0.69	0.68	0.71	0.68	0.66	0.70	0.66	0.63	0.69	0.64	0.60	0.66	0.61	0.57	0.53
6	0.65	0.62	0.61	0.65	0.62	0.60	0.64	0.60	0.57	0.63	0.58	0.54	0.61	0.56	0.51	0.48
7	0.59	0.57	0.55	0.59	0.56	0.54	0.59	0.55	0.52	0.58	0.53	0.49	0.57	0.51	0.47	0.43
8	0.54	0.51	0.50	0.54	0.51	0.49	0.54	0.50	0.47	0.54	0.48	0.45	0.53	0.47	0.42	0.39
9	0.49	0.47	0.46	0.49	0.47	0.45	0.50	0.46	0.43	0.50	0.45	0.41	0.49	0.43	0.39	0.36
10	0.45	0.43	0.42	0.46	0.43	0.41	0.46	0.42	0.39	0.46	0.41	0.38	0.46	0.40	0.36	0.33

Indoor Budgetary Estimate Chart



UGR综合眩光指数表

Ceiling	70	70	50	50	30	70	70	50	50	30	
Wall	50	30	50	30	30	50	30	50	30	30	
Floor	20	20	20	20	20	20	20	20	20	20	
Room Size		Left to light axis direction of observation					Direction of light axis parallel observation				
X	Y										
2H	2H	13.8	15.1	14.1	15.0	15.5	13.9	15.0	14.1	15.1	15.6
	3H	15.3	16.4	15.8	16.8	17.0	15.3	16.3	15.6	16.9	17.0
	4H	16.0	17.1	16.4	17.6	17.7	16.0	16.9	16.3	17.5	17.6
	6H	16.5	17.6	17.0	17.8	18.0	16.4	17.3	16.9	17.8	17.9
	8H	17.0	17.9	17.1	17.8	18.2	16.8	17.8	16.9	18.0	18.3
4H	12H	16.9	17.8	17.1	18.2	18.5	16.8	17.6	17.1	18.1	18.4
	2H	14.9	15.7	15.0	15.8	16.2	14.7	15.6	14.8	15.9	16.1
	3H	16.6	17.3	16.8	17.5	17.8	16.4	17.2	16.7	17.4	17.7
	4H	17.2	18.0	17.6	18.1	18.3	17.0	17.8	17.4	18.2	18.3
	6H	17.8	18.5	18.1	18.6	19.1	17.6	18.3	18.0	18.6	19.0
8H	8H	18.1	18.7	18.3	18.9	19.3	17.9	18.6	18.3	18.8	19.2
	12H	18.2	18.8	18.5	19.0	19.4	18.0	18.7	18.5	19.1	19.3
	4H	17.4	18.1	17.9	18.3	18.7	17.4	18.1	17.8	18.3	18.7
	6H	18.3	18.7	18.7	19.1	19.4	18.2	18.6	18.6	19.1	19.4
	8H	18.5	19.1	19.0	19.3	19.8	18.5	18.8	18.9	19.3	19.7
12H	12H	18.9	19.3	19.2	19.7	20.0	18.8	19.3	19.2	19.5	20.1
	4H	17.6	18.1	18.0	18.4	18.8	17.4	18.0	17.8	18.4	18.8
	6H	18.4	18.9	18.7	19.1	19.5	18.4	18.7	18.7	19.1	19.5
	8H	18.9	19.2	19.2	19.3	19.9	18.7	19.0	19.2	19.4	19.9